



2019 International Edition  
**Cleanroom Products Guide**



*Quality  
Value  
Service*



## Leading the world standard of cleanroom consumables

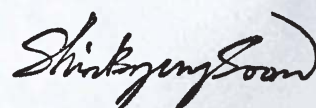
KM Corp. has been dedicated its effort to innovate consumable products for ultra clean manufacturing environments including Semiconductors, FPDs and Micro-electronics. Under the KM product lines, KM provides a total solution for all kinds of cleanroom consumables with quality and service.



As a ISO 9001, 14001 and OHSAS 18001 certified manufacturer, we have been developing new products under the joint R&D work with world leading semiconductor makers. Through close communication with customers for the development of cleanroom consumables, KM have been developing customized cleanroom products for specific applications. Class 10 cleanroom facility, advanced test instruments & procedures, and dedicated technical supports are another part of KM's product innovation.

KM's extensive product lines cover all kinds of consumables from class 1 cleanroom to general industrial applications. This single source availability enables customers one-stop shopping for all kinds of cleanroom disposables with quality & on-time delivery.

This catalog is to help our valuable customers to select the right products for your delicate applications. KM is proud of having world-best customers just like you, and we will do our best to support you by providing high quality cleanroom consumables, leading the world standard of cleanroom consumables with measurable difference.



B. S. Shin, President

# World Wide Manufacturing Facility & Global Network



- 1 Anseong Office & Warehouse    2 Anseong Factory  
3 Pyeongchang Factory    4 Suzhou Factory    5 Rotterdam Warehouse  
6 Shanghai Office    7 KM ACT Corp.(Houston)  
8 USA Warehouse(Houston)    9 USA Warehouse(Austin)

Leading the world standard  
of cleanroom consumables

# Company History



1989	Sep.	Founded Hankook Glove Co., Ltd.
	Jul.	Set-up Pyungchang factory. Initiated production of ESD Class 10 PVC Glove
1990	Apr.	Changed company name into Woojin ACT corp.
	Sep.	Extended ESD Class 10 PVC Glove LINE
1993	Jan.	Set-up Clean Paper production line
	Dec.	Set-up Class 10 Wiper production factory (Anseong factory)
1996	Dec	Certified KSA9001 / ISO9001 (KPC)
1997	Jun	Selected as "Promising Exporting Venture capital company" (SBC)
1999	Jul.	Established Dowoo Medical Corp.
2000	Jul.	Set-up Contamination Control R&D Center at Anseong
	Nov.	Awarded "Best Venture capital company" (Prime minister prize)
2001	Dec.	Set-up "Woojin ACT (Shozhou) Co., Ltd." corporation
2003	Oct.	Awarded "Best Venture capital company" (President Prize)
2004	Jan.	Certified ISO140001/OHSAS18001
	May.	Established Dongsan LCD Corp.
	Jul.	Set-up "Woojin ACT (Shanghai) international trading Co., Ltd."
	Dec.	Listed on KOSTAQ
2005	Nov.	Awarded "Tower of ten million dollar exporter"
	Dec.	Set-up distribution center
2006	Jan.	Set-up "KM ACT corporation." (Texas Austin USA)
	Mar.	Set-up "Clean bag, Tyvek pouch"
2007	Apr.	Changed company name to KM Corp.
2008	Apr.	Set-up "e-shop"
2009	Apr.	Set-up "Medical business department"
	Jun.	Established "2nd Anseong factory"
	Nov.	Set-up "T-Dies pressing line & Coating line"
2011	Nov.	Awarded "Runner-up prize of Green management grand prize"
	Dec.	Awarded "Tower of twenty million dollar exporter"
2012	Mar.	KM ACT Corporation moved to Houston from Austin
	Dec.	Awarded "Tower of Thirty million dollar exporter"
2013	Apr.	Designated "Global Small Giant Enterprise"
2014	Dec.	Launching a brand of Safety prodcuts ('SAFESYS')
2015	Mar.	A faithful taxpayer certification (The Governor of Gyeonggi Province)
	Jun.	Launching a brand of Household prodcuts ('Dr.Puri') Set-up a manufacturing line of Cleanroom shoes & boots
2016	Mar.	Completion of a third factory in Anseong for K-Project
	Dec.	Completion of a third factory in Anseong for Anti-yellow dust mask
2018		



# Contents



## 1 Gloves

PVC Glove, PVC ECON Glove, Latex Glove, Nitrile Glove, Examination Glove, Seamless Glove, Liner Glove, PU Coated Thick / Thin Glove, PVC Coated Hi-flex / N-flex Glove, Palm & Top PU Coated / Nylon, Cool Palm & Top PU Coated/Polyester, Finger Cot, Virgin PE Glove, Anti-static High Temperature Glove



## 2 Wipers

Micro-denier Clean Wipers Heat Sealed Edge WW-4000 Series, Polyester Clean Wipers Ultra Sealed Edge KM-4000 Series, Polyester Clean Wipers Heat Edge WW-3000 Series, Polyester Clean Wipers Double Knit High Absorption, ESD Clean Wipers WW-5009/WW-6009, Non-woven Wipers, Clean Roll Wipers, Sterilized Clean Wipers, Presaturated Wipers, ECO Wipers, PVA Wipers



## 3 Stationery

Clean Paper Products, Video Print Paper, Clean Paper Roll Label, Clean Roll Label, ESD Clip Board, Tape, Lead Frame Insert Paper, Mouse Pad



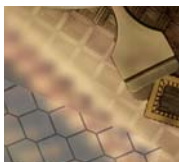
## 4 Cleaners

Sticky Mat, Sticky Roller, Clean Roller, DCR Roller, DCR Pad, DCR Hand Cleaner & Stick Cleaner, SWAB, Mops, Cleanroom Sterilizable Mops



## 5 Garments

Garment Fabrics, Nano Max & Neo Chem, Coverall, Jacket & Pants, Gown, Neo Under Wear, Under Wear, Cap & Hood, Garment Accessory, Disposable Face Mask, Shoe Cover, Bouffant Cap, Neo Shoes & Boots, Static-dissipative Shoes, Conductive shoes, Slippers, Boots, Neo Safety Shoes & Safety Boots, Cleanroom Safety Shoes & Safety Boots



## 6 ESD Products

ESD Table Mat, Ground Cord, ESD Cushion Mat, Wrist Strap, Conductive Part Box, Magazine Rack, ESD PVC Sheet, Ionizing Blower



## 8 Package

Anti-static PE Bag, ESD Shielding Bag, Moisture Barrier Bag, PE Clean Bag, Virgin PE Clean bag, PET Clean Bag, Wafer Carrier Bag, Perpak®



## 7 Safety

Palm PU Coated / Dyneema, Cut Level 5 Glove, Chemical Glove, Cup Mask, Safety Glasses & Goggles, Autoclavable Goggles



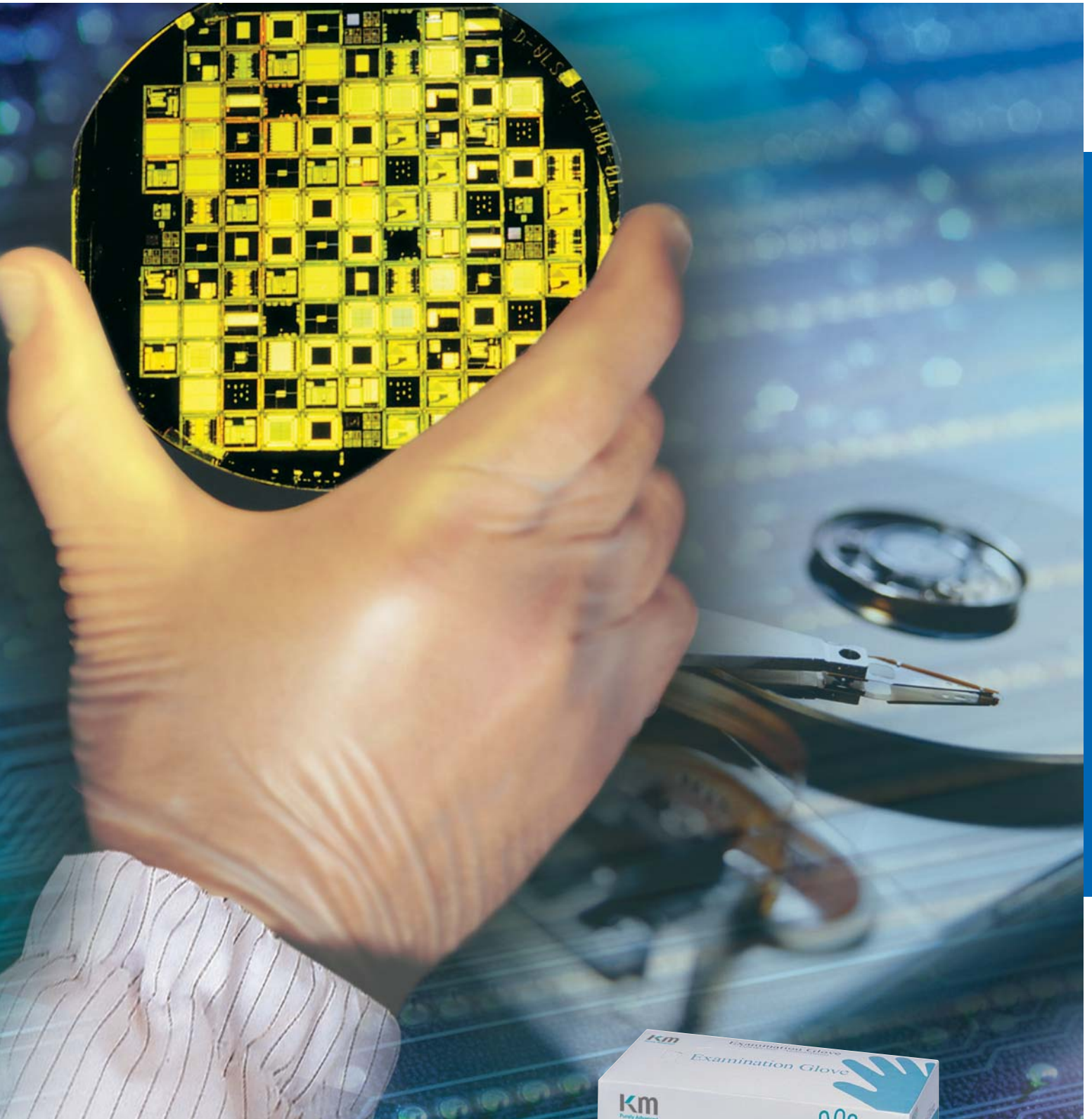
## 9 Spare Products

Sieve, Harvesting Cart, Clean Chair

## ICON Guide

Cleanroom Class 10	Cleanroom Class 100	Cleanroom Class 1000				
Semiconductor FAB	Semiconductor Assembly	TFT LCD	TFT LCD Assembly	BLU	Inspection	HDD
VLSI	PCB	Lead Frame	Optics	Atomic Power	Industrial	Pharmacy
Automobile	Steel	Ship Building	Electronics	Oil	Paper	Gas
Food Industrial	Chemistry	Household	Hospital	Mechanics	Laboratory	Aviation
Cutting Protection	Thermal Resistance	Solar	Mobile Display			

# GLOVES





# GLOVES

## PVC Glove



PVC Glove

KM PVC Gloves feature powder-free, anti-static, low extractable ions, improved textured finger-tip, ambidextrous in fit. It is manufactured and packaged in a class10 cleanroom facility under strict quality standards and measures. An innovative formulation without DOP plasticizer makes glove clean and durable without sacrificing thickness. KM PVC Gloves guarantee excellent contamination barrier for your clean environment.

- ISO 9001:2008 certified class 10 cleanroom manufacturing
- High quality formulation without DOP plasticizer
- Low extractable ions, superior chemical resistance & textured finger-tip
- 5-mil thickness provides excellent tactile sensitivity
- Applications : Class 10 cleanrooms for Semiconductor, LCD, HDD manufacturing

### How to order

Code	Size	Length	Packing Unit
KMGF-S121K	S	12"	100 pcs / 10 bags
KMGF-S122K	M		
KMGF-S123K	L		
KMGF-S124K	XL		

### Technical Data

Contents		Specifications
		12"
<b>Contamination Control</b>		
Particle Count (pcs $\geq$ 0.3 $\mu$ m , ea/ft <sup>3</sup> )		< 10
Pin hole (ea)		< 10
Chemical Resistance (sec. for 99.7% Acetone)		> 60
Static Buildup (V)	After friction	< 300
<b>General Characteristics</b>		
Tensile Strength (kg.f/cm <sup>2</sup> )		> 100
Elongation (%)		> 240
Thickness ( $\mu$ m)	Wrist	130 $\pm$ 20
	Palm	150 $\pm$ 20
	Finger	130 $\pm$ 20



## PVC ECON Glove



KM PVC ECON Gloves are designed for cleanroom applications with less cost, but contamination level should be maintained.

These powder-free PVC Gloves are extremely soft and viable, so they are good for extended fine handy work in the controlled environment. Like the other cleanroom gloves, KM ECON Gloves offer anti-static, low extractable ion contents, and good chemical resistance.

- Low price, but high quality
- Extremely soft and viable
- Anti-static formulation prevents ESD accident
- Low pin-hole level minimizes contamination
- Applications : Class 100~100,000 Cleanrooms for Semiconductor, LCD manufacturing



PVC ECON Glove

### How to order

Code	Size	Length	Packing Unit
KMGF-S201M	S	10"	100 pcs / 10 bags
KMGF-S202M	M		
KMGF-S203M	L		
KMGF-S204M	XL		
KMGF-S221M	S	12"	100 pcs / 10 bags
KMGF-S222M	M		
KMGF-S223M	L		
KMGF-S224M	XL		

### Technical Data

Contents	Specifications	
	10"	12"
<b>Contamination Control</b>		
Particle Count (pcs $\geq$ 0.3 $\mu$ m , ea/ft <sup>3</sup> )	$\leq$ 100	
Pin hole (ea)	< 10	
Chemical Resistance (sec. for 99.7% Acetone)	> 60	
Static Buildup (V)	Before friction	$\leq$ 150
	After friction	$\leq$ 200
<b>General Characteristics</b>		
Tensile Strength (kg.f/cm <sup>2</sup> )	$\geq$ 100	
Elongation (%)	$\geq$ 350	
Thickness ( $\mu$ m)	Wrist	60 $\pm$ 10
	Palm	80 $\pm$ 30
	Finger	140 $\pm$ 30



Latex Glove

## Latex Glove



100% natural rubber Latex Glove is produced under up-to-date cleanroom facility with ISO 9001: 2008 certification. These ultra-clean processed powder-free latex gloves are suitable for cleanroom and general industries where delicate handy work is required.

Anti-slip bisque finish gives firm grip, and beaded cuffs enhance contamination control.

- ISO 9001:2008 certified cleanroom manufacturing
- High grade natural rubber formulation minimizing allergic reaction
- Low extractable ions, superior chemical resistance, and textured finger-tip
- Sterilization is available
- Budget-wise powder-free KMLT-200 series
- Applications: Class 100 cleanrooms for Semiconductor, LCD, HDD manufacturing

### How to order

Code	Size	Length	Class	Packing Unit
KMLT-101	S	10"	100	100 pcs / 10 bags
KMLT-102	M			
KMLT-103	L			
KMLT-104	XL			
KMLT-121	S	12"		
KMLT-122	M			
KMLT-123	L			
KMLT-124	XL			
KMLT-201	S	10"	Powder-free	
KMLT-202	M			
KMLT-203	L			
KMLT-204	XL			
KMLT-221	S	12"		
KMLT-222	M			
KMLT-223	L			
KMLT-224	XL			

### Technical Data

Contents	Specifications	
	KMLT-100 series	
Contamination Control		
Particle Count (pcs≥0.3μm, ea/ft³)		< 100
Pin hole (ea)		< 10
Chemical Resistance (sec. for 99.7% Acetone)		≥ 60
Static Buildup (V)	Before friction	< 100
	After friction	< 200
General Characteristics		
Tensile Strength (kg.f/cm²)		≥ 100
Elongation (%)		≥ 500
Thickness (μm)	Wrist	120±30
	Palm	200±30
	Finger	230±30



## Nitrile Glove



KM Nitrile Gloves are developed specifically for high-tech industries requiring tough applications, but cleanliness should be maintained. These synthetic rubber glove contains no silicon or plasticizer which are known not only as harmful chemicals to human but also contaminants at clean manufacturing environment. Unlike natural rubber latex, KM Nitrile Gloves are made of allergy-free synthetic material, while anti-static agent are formulated in the mixing process for long term protection at ESD sensitive area.

- ISO 9001:2008 certified cleanroom manufactured
- Anti-static synthetic rubber minimizing latex allergic reaction
- Low extractable ions, superior chemical resistance, and textured finger-tip
- Sterilization is available.
- Economic powder-free KMNL-200 series
- Applications: Class 100 cleanrooms for Semiconductor, LCD, HDD manufacturing



Nitrile Glove

### How to order

Code	Size	Length	Class	Packing Unit
KMNL-101	S	10"	100	100 pcs / 10 bags
KMNL-102	M			
KMNL-103	L			
KMNL-104	XL			
KMNL-121	S	12"		
KMNL-122	M			
KMNL-123	L			
KMNL-124	XL			
KMNL-201	S	10"	Powder-free	
KMNL-202	M			
KMNL-203	L			
KMNL-204	XL			
KMNL-221	S	12"		
KMNL-222	M			
KMNL-223	L			
KMNL-224	XL			

### Technical Data

Contents		Specifications
		KMNL-100 series
<b>Contamination Control</b>		
Particle Count (pcs $\geq 0.3\mu\text{m}$ , ea/ft <sup>2</sup> )		< 100
Pin hole (ea)		< 10
Chemical Resistance (sec. for 99.7% Acetone)		$\geq 60$
Static Buildup (V)	Before friction	$\leq 100$
	After friction	$\leq 200$
<b>General Characteristics</b>		
Tensile Strength (kg.f/cm <sup>2</sup> )		$\geq 140$
Elongation (%)		$\geq 500$
Thickness ( $\mu\text{m}$ )	Wrist	$\geq 80$
	Palm	$\geq 100$
	Finger	$\geq 100$



Examination PVC Glove



Examination Latex Glove



Examination Nitrile Glove

## Examination Glove

KM Examination glove series are designed for multi-purpose with economic cost and have three kinds of glove - PVC, LATEX, NITRILE. These Examination gloves are ideal for Laboratory, food industry and general working environment where need high tensile strength, bursting strength and chemical resistance.

### Examination PVC Glove



- Extremely soft
- Anti-static feature and powder free
- Low pin-hole level
- Application: Semiconductor, Pharmacy, Laboratory, Food industry, Household

#### How to order

Code	Size	Length	Packing Unit
KMEP-101	S	10"	100 pcs / 10 boxes
KMEP-102	M		
KMEP-103	L		
KMEP-104	XL		
KMEP-121	S	12"	
KMEP-122	M		
KMEP-123	L		
KMEP-124	XL		

### Examination Latex Glove



- High grade natural rubber
- Chemical resistance, and textured finger-tip
- Provide superior tactile sensitivity, excellent fit for environment where a sense of touch is necessary
- Low level of extractable protein reduces risk of allergic reaction
- Application: Laboratory, Food industry, Household

#### How to order

Code	Size	Length	Packing Unit
KMEL-101	S	10"	100 pcs / 10 boxes
KMEL-102	M		
KMEL-103	L		
KMEL-104	XL		
KMEL-121	S	12"	
KMEL-122	M		
KMEL-123	L		
KMEL-124	XL		

### Examination Nitrile Glove



- Synthetic rubber minimize skin allergic reaction
- Anti-static, superior chemical resistance, and textured finger-tip
- Provide superior tactile sensitivity, excellent fit
- Free from harmful proteins
- Application: Semiconductor, Bio-technology, Food industry, Hospital, Laboratory, Household

#### How to order

Code	Size	Length	Packing Unit
KMEN-101	S	10"	100 pcs / 10 boxes
KMEN-102	M		
KMEN-103	L		
KMEN-104	XL		
KMEN-121	S	12"	
KMEN-122	M		
KMEN-123	L		
KMEN-124	XL		



## Seamless Glove



KM Seamless Gloves are made of stretchable polyester with PU coating or stretchable span with PU coating on the fabric surface. Through up-to-date coating & sealing technologies (the vapor of sweat go through the fabric out) while trapping micro particle inside. With this breathable fabric, KM Seamless Gloves need no Liner Glove with great comfort and contamination barrier in the controlled environment.

- Breathable PU coated fabric
- No needle hole, no seam line
- Thin & stretchable fabric
- Prevent from skin disease & allergic reaction
- Applications: Class 10~1,000 Cleanroom for Semiconductor, LCD, BLU manufacturing



Seamless Glove

### How to order

Code	Size		Class	Packing Unit
KMSLP-621	S	Poly	10	5 prs / 10 bags
KMSLP-622	M			
KMSLP-623	L			
KMSLP-624	XL			
KMSLP-821	S	Poly	1000	
KMSLP-822	M			
KMSLP-823	L			
KMSLP-824	XL			
KMSLS-621	S	Span	10	5 prs / 10 bags
KMSLS-622	M			
KMSLS-623	L			
KMSLS-624	XL			
KMSLS-821	S	Span	1000	
KMSLS-822	M			
KMSLS-823	L			
KMSLS-824	XL			

### Technical Data

Contents	Specifications	
	Poly	Span
<b>Contamination Control</b>		
Particle Count (pcs $\geq 0.3\mu\text{m}$ , ea/ft <sup>2</sup> )	$\leq 100$	$\leq 30$
Pin hole (ea)	0	0
Chemical Resistance (sec. for 99.7% Acetone)	$> 60$	$> 60$
Extractable Ions (ppm)	K	0.05
	Ca	0.05
	Na	0.3
	Cl	0.05
<b>General Characteristics</b>		
Stactic Buildup(V)	$\leq 500$	$\leq 500$
Seal Strength (kg.f)	$\geq 1.0$	$\geq 1.3$
Thickness ( $\mu\text{m}$ )	$220 \pm 20$	$290 \pm 20$





Half Liner



Full Liner



ESD Polyester

## Liner Glove



KM Liners are generally worn inside outer gloves such as PVC, Latex or Nitrile to protect from skin irritating, made of 100% stretchable Nylon, KM Liner guarantees comfort and fitness.

- Ergonomic design provides excellent fitness
- Made of continuous filament no-lint stretchable Nylon
- Reusable and laundrable
- Ambidextrous in fit and free size
- Applications: Class 10 Cleanroom for Semiconductor, LCD, Electronics

### How to order

Code	Size	Length	Packing Unit
KMLH-21	Free	Half Finger	10 prs / 30 bags
KMLH-22	XL		
KMLF-21	S		
KMLF-22	M	Full Finger	
KMLF-23	L		
KMLF-24	XL		
KMLF-25	XXL		

## ESD Polyester Glove



KM ESD Polyester Gloves are made of 100% polyester, continuous less-linting filament knitted with carbon fiber.

This glove, as an ideal barrier from harmful contaminants, will dissipate an electro-static discharge within a second. KM ESD Glove is commonly used as an inner glove together with PVC or Latex. It also can be an outer glove in the class 1000 cleanroom environment.

- Less lint continuous polyester filament with carbon lines
- Surface resistivity:  $10^6$ - $10^9 \Omega / m^2$
- Less than 0.1 sec decay time
- Delicate round-tip finishing
- Applications: Electronics, Assembly at Semiconductors, LCD and HDD manufacturing

### How to order

Code	Size	Length	Packing Unit
KMSD-501	S	10"	10 prs / 30 bags
KMSD-502	M		
KMSD-503	L		
KMSD-504	XL		
KMSD-521	S	12"	
KMSD-522	M		
KMSD-523	L		
KMSD-524	XL		



## PU Coated Thick / Thin Glove



KM PU-Coated Gloves protect sweat and particles by fully applied PU coating on the palm of gloves. Specially processed PU compound, KM PU-Coated Gloves feature enhanced grip while protecting contaminants from palm. To protect ESD accident, the back of the glove is made of lint-free polyester with carbon fiber.

- Fully applied PU coating on palm side of glove
- Non-slip palm coating guarantees firm grip
- Continuous polyester filament knitted with carbon fiber
- Surface resistivity:  $10^6 \sim 10^{10} \Omega / m^2$
- Applications: Electronics, Assembly at Semiconductors, LCD, and HDD manufacturing

### How to order

Code	Size	Description	Packing Unit
KMPG-301	S	10" thick coating	10 prs / 30 bags
KMPG-302	M		
KMPG-303	L		
KMPG-304	XL		
KMPG-311	S	10" thin coating	
KMPG-312	M		
KMPG-313	L		
KMPG-314	XL		



Thick Coating



Thin Coating

## PVC Coated Hi-flex / N-flex Glove



KM N-Flex & Hi-Flex Gloves offer PVC coating on the palm side of glove, so wearer has firm grip without much force on their hand. N-shaped (N-Flex) or Dot-shaped (Hi-Flex) PVC coating on cotton fabric also provides barrier against contaminants from palm skin. The back of the glove is made of less lint polyester with carbon line for ESD sensitive environment.

- PVC coating provides firm grip without much force of hand
- Continuous polyester filament with carbon fiber for ESD protection
- Surface resistivity:  $10^6 \sim 10^{10} \Omega / m^2$
- Applications: Electronics, Assembly at Semiconductors, LCD, and HDD manufacturing

### How to order

Code	Size	Length	Packing Unit
KMSG-401	S	10" N-Flex	10 prs / 30 bags
KMSG-402	M		
KMSG-403	L		
KMSG-404	XL		
KMSG-411	S	10" Hi-Flex	
KMSG-412	M		
KMSG-413	L		
KMSG-414	XL		



Hi-flex



N-flex



Palm Coating



Top Coating



ESD, Top Coating



ESD II, Palm Coating

## Palm & Top PU Coated / Nylon



Palm & Top PU Coated Gloves are designed for working gloves with PU coating on palm or fingertip of the glove. This type of glove is ideal for the applications from general industries to ESD sensitive microelectronic industries, where cleanliness is not critical, but moderate protection is required.

- Continuous less-lint stretchable Nylon knitted
- Lint-free seamless structure
- Advanced formulation - soft & anti skid coating
- Conductive fiber prevent ESD accident
- Comfortable on extended use and reusable
- Hand specific reduces hand fatigue
- Applications: Electronics & Part Assembly, Industrial & Home Maintenance

### How to order

Code	Size	Description	Packing Unit
KMPF-101	S	Palm Coating	10 prs / 30 bags
KMPF-102	M		
KMPF-103	L		
KMPF-104	XL		
KMPF-105	2XL		
KMPF-201	S	ESD(copper), Palm Coating	
KMPF-202	M		
KMPF-203	L		
KMPF-204	XL		
KMPF-205	2XL		
KMPF-301	S	ESD II (carbon), Palm coating	
KMPF-302	M		
KMPF-303	L		
KMPF-304	XL		
KMPF-305	2XL		
KMTF-101	S	Top Coating	
KMTF-102	M		
KMTF-103	L		
KMTF-104	XL		
KMTF-105	2XL		
KMTF-201	S	ESD(copper), Top Coating	
KMTF-202	M		
KMTF-203	L		
KMTF-204	XL		
KMTF-205	2XL		
KMTF-301	S	ESD II (carbon), Top coating	
KMTF-302	M		
KMTF-303	L		
KMTF-304	XL		
KMTF-305	2XL		

### Technical Data

Contents	Specifications		
	ESD	ESD II	Plain
Yarn	70D / 24F	70D / 24F	70D / 24F
Composition of fabric (%)	Nylon80 / Copper20	Nylon80 / Carbon20	Nylon 100
Coating Material	Polyurethane	Polyurethane	Polyurethane
Surface Resistivity ( $\Omega / \text{cm}^2$ )	$10^3 \sim 10^5$	$10^5 \sim 10^8$	N/A
Length (inch)	9.5	←	←
Weight (g / pair)	15.5~18g	←	←

## Cool Palm & Top PU Coated/Polyester



Cool Palm & Top PU Coated Gloves are designed for working gloves with PU coating on palm or fingertip of the glove. This type of glove is ideal for the applications from general industries to ESD sensitive microelectronic industries, where cleanliness is not critical, but moderate protection is required.

- Continuous less-lint stretchable knitted
- Knitted by "AEROCOOL" which is functional & developed
- Lint-free seamless structure
- Advanced formulation - soft & anti skid coating
- Conductive fiber prevent ESD accident
- Comfortable on extended use and reusable
- Hand specific reduces hand fatigue
- Applications: Electronics & Part Assembly, Industrial & Home Maintenance

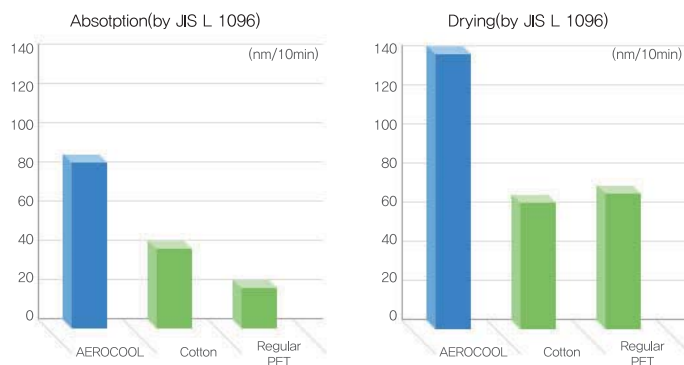
### How to order

Code	Size	Description	Packing Unit
KMCPF-101	S	Palm coating	10 prs / 30 bags
KMCPF-102	M		
KMCPF-103	L		
KMCPF-104	XL		
KMCPF-105	2XL		
KMCTF-101	S	Top coating	
KMCTF-102	M		
KMCTF-103	L		
KMCTF-104	XL		
KMCTF-105	2XL		

### Features

- Delivers exceptionally pleasant feel, quickly dries sweat
- Maintains permanent absorbent & quick-drying function
- Absorbs sweat quicker than natural fibers

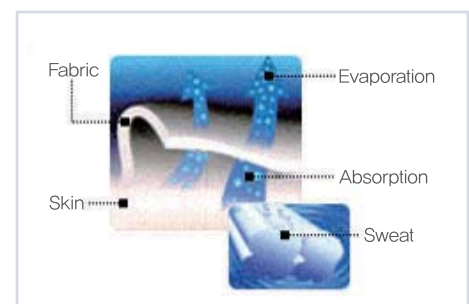
### Chart of Absorption and Drying Function



Cool Palm PU Coated Glove



Cool Top PU Coated Glove



AEROCOOL  
Moisture Control System



Cross Section of  
AEROCOOL



## Finger Cot



**White/Powder-free**



**Pink/Powder-free/Anti-static**



**Yellow/Powder-free/Anti-static(Chlorinated)**



**Black/Conductive**

KM Finger Cots are offering a barrier to particle or sweat from finger-tip side in the controlled environment.

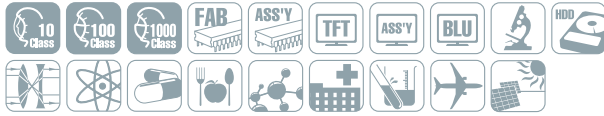
- Fine quality 100% natural rubber
- Ultra thin finger tip enables delicate handy work
- Minimize allergic reaction
- No migration and stickiness
- Applications: PCB, Electronics, LCD & Semiconductor Assembly

### How to order

Code	Size	Description	Packing Unit
KMFC-101	S	White / Powder-free / Smooth	10 grs / 20 bags
KMFC-102	M		
KMFC-103	L		
KMFC-104	XL		
KMFC-201	S	Pink / Powder-free / Anti-static / Smooth	
KMFC-202	M		
KMFC-203	L		
KMFC-204	XL		
KMFC-301	S	Yellow / Powder-free / Anti-static / Smooth	
KMFC-302	M		
KMFC-303	L		
KMFC-304	XL		
KMFC-401	S	Black / Conductive / Smooth	
KMFC-402	M		
KMFC-403	L		
KMFC-404	XL		

※ Textured type is available

## Virgin PE Glove



Virgin PE Clean Glove is designed to solve the contamination level in high purity polysilicon packaging process.

Virgin PE Clean Glove is strictly controlled against Antioxidants, Ion, Metal Impurity, etc.

Various size and spec is available by characteristic of process.

- 100% LDPE Virgin Resin
- Manufactured and packaged in the class 10 ~ 100 cleanroom
- Strict quality control by ISO 9001:2008
- Various size, spec are available for customer convenience

### How to order

Description	Thickness	Size	Packing Unit
Virgin PE Glove	80 $\mu$ m	S	100 pcs / bag
		M	
	120 $\mu$ m	S	10 bags / box
		M	

### Technical Data

Property	Unit	Virgin PE Glove
Material	-	LDPE
Antioxidants	ppm	< 5
Slipagents	ppm	< 10
Ion	ppm	< 10
Metal Impurity	ppm	< 10
LPC ( $\geq 0.5\mu$ m)	ea/ml	< 10
Static	Volts	< 500



Virgin PE Glove

## Anti-static High Temperature Glove



KMTR-01

Anti-static High Temperature Glove is PU coated on the fabric that is composed of Acryl and Nylon.

It is used in semiconductor cleanroom and IC factory, pharmaceutical to handle the high temperature object.

### How to order

Code	Size	Description	Packing Unit
KMTR-01	Free	150°C	1 pair / bag
KMTR-02	Free	300°C	
KMTR-03	Free	500°C	



KMTR-02



KMTR-03

# WIPERS



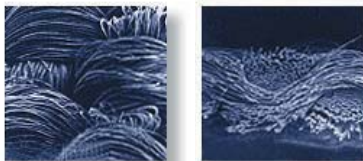


# WIPERS

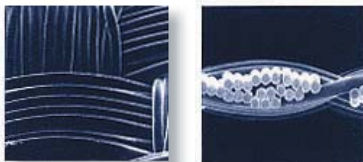
## Micro-denier Clean Wipers Heat Sealed Edge WW-4000 Series



WW-4009



Micro-denier Fabric, Magnified



Polyester Fabric, Magnified

KM Micro-denier is made of 0.13 denier of continuous filament that ensures unparalleled wiping ability with high absorbency and cleanliness. With ultra-fine structure of its fabric, the fabric of KM Micro-denier provides wide contact to surface so that contaminants on the surface are removed effectively. This fabric also provides more room between fibers, so absorption capacity is increased more than twice than other cleanroom polyester wipers.

- Micro-filament provides better contact to surface
- Laundered and packaged in the class 10 cleanroom
- Sealed edges prevent particle or lint generation
- Ultra-fine fabric structure increase absorbency capacity
- Applications: Class 10 cleanroom for Semiconductor, LCD and HDD manufacturing

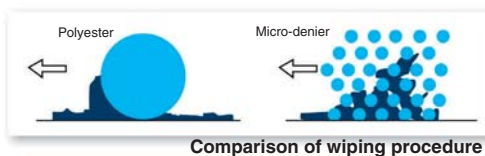
### How to order

Code	Size	Description	Packing Unit
WW-4006	6" x 6"	Heat Sealed Edges / Stacking	100 pcs / 10 bags
WW-4009	9" x 9"		
WW-4006HK	6" x 6"		
WW-4009HK			
WW-4009UM	9" x 9"		
WW-4009TM			

※ HK:High-density Knit

### Technical Data

Contents		Specifications			
		WW-4009	WW-4009HK	WW-4009UM	WW-4009TM
<b>Contamination Control</b>					
Particle Count (0.5μm, ea/m <sup>2</sup> ) (≥ 0.3μm, ea)	Liquid Particle Count (per m <sup>2</sup> )	0.4 x 10 <sup>6</sup>	0.4 x 10 <sup>6</sup>	0.6 x 10 <sup>6</sup>	0.6 x 10 <sup>6</sup>
	Air Borne Particle (per ft <sup>3</sup> )	≤ 40	≤ 40	≤ 50	≤ 75
	Lint (>100μm, EA/Sh)	≤ 20	≤ 20	≤ 30	≤ 45
NVR (g/m <sup>2</sup> )	DI Water	0.02	0.02	0.02	0.02
	IPA	0.1	0.1	0.1	0.1
Extractable Ions (ppm)	Na	0.2	0.013	0.132	0.049
	K	0.02	1.23	0.016	0.017
	Cl	0.13	0.01	0.065	0.019
	NO <sub>2</sub>	0.01	0.01	0	0
<b>General Characteristics</b>					
Weight (g/m <sup>2</sup> )		96 ± 10	210 ± 21	200 ± 20	200 ± 20
Absorbency	Capacity (ml/m <sup>2</sup> )	≥ 120	≥ 350	≥ 220	≥ 220
	Capacity (ml/g)	1.25	1.67	1.09	1.09
Time to sorption	(sec/6 ø)	≤ 10	≤ 10	≤ 30	≤ 30
Tensile strength (kg.f/cm <sup>2</sup> )	MD (Machine Direction)	≥ 400	≥ 300	≥ 400	≥ 400
	CD (Cross Direction)	≥ 400	≥ 150	≥ 400	≥ 400
Thickness (μm)		200 ± 20	470 ± 20	420 ± 20	420 ± 20



Comparison of wiping procedure

## Polyester Clean Wipers

### Ultra Sealed Edge KM-4000 Series



KM-4000D is a ultra clean wiper with sealed & fused border designed for class 10 cleanroom applications. Minimizing particle or lint generation caused by edge damage in actual use, KM-4000D provides a 4-side fused border for better protection on wiper edge. This kind of wipers are recommended for rigorous wiping applications, but cleanliness should be maintained.

- Class 10 compatible clean wipers
- Laundered and packaged in the class 10 cleanroom
- Fused border to protect edges at tough wiping operation
- Thermally sealed edges prevent particle or lint generation
- Double bag packaging prevent cross contamination
- Applications: Class 10 cleanroom for Semiconductor, LCD, HDD manufacturing

#### How to order

Code	Size	Description	Packing Unit
KM-4000L	9" x 9"	4-side Ultra Sealed Edges / Stacking	100 pcs / 10 bags
KM-4000	9" x 9"		
KM-4000D	9" x 9"		

#### Technical Data

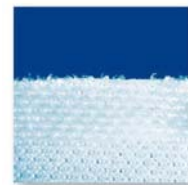
Contents		Specifications		
		KM-4000	KM-4000L	KM-4000D
<b>Contamination Control</b>				
Particle Count (0.5 $\mu$ m, ea/m <sup>2</sup> ) ( $\geq 0.3\mu$ m, ea)	Liquid Particle Count (per m <sup>2</sup> )	0.1 x 10 <sup>6</sup>	0.2 x 10 <sup>6</sup>	0.2 x 10 <sup>6</sup>
	Air Borne Particle (per ft <sup>3</sup> )	$\leq 20$	$\leq 20$	$\leq 20$
	Lint (> 100 $\mu$ m, EA/Sh)	$\leq 10$	$\leq 20$	$\leq 20$
NVR (g/m <sup>2</sup> )	DI water	0.02	0.02	0.02
	IPA	0.1	0.1	0.1
Extractable Ions (ppm)	Na	0.16	0.118	0.1
	K	0.078	0.019	0.1
	Cl	0.055	0.045	0.05
	NO <sub>2</sub>	0	0	0.05
<b>General Characteristics</b>				
Weight (g/m <sup>2</sup> )		145 $\pm$ 15	168 $\pm$ 17	168 $\pm$ 23
Absorbency	Capacity (ml/m <sup>2</sup> )	$\geq 260$	$\geq 370$	$\geq 370$
	Capacity (ml/g)	1.77	2.21	2.21
Time to sorption	(sec/6 $\phi$ )	$\leq 4$	$\leq 4$	$\leq 4$
Tensile Strength (kg.f/cm <sup>2</sup> )	MD (Machine Direction)	$\geq 150$	$\geq 150$	$\geq 150$
	CD (Cross Direction)	$\geq 150$	$\geq 150$	$\geq 150$
Thickness ( $\mu$ m)		450 $\pm$ 20	580 $\pm$ 20	580 $\pm$ 20



KM-4000D



KM-4000D



"B" Brand Wiper

#### Comparison of edge finishing



Fused border



WW-3009



WW-3009



"A" Brand Wiper

Comparison of edge finishing

## Polyester Clean Wipers

### Heat Sealed Edge WW-3000 Series



Sealed Edge Polyester Clean Wipers are designed for use of class 10 ~ 100 where particles, harmful ions and NVR should be minimized. These wipers are cut by latest technology cutting machine to improve preventing particle or lint generation.

- Class 10 cleanroom compatible - WW-3009
- Class 100 cleanroom compatible - WW-3008L
- Class 100 cleanroom compatible - WW-3009N
- Class 100~1000 cleanroom compatible - WW-3009NPSE
- Sealed edges prevent particle or lint generation
- Double bag packaging prevents contamination
- Applications: Class 10~1000 cleanroom for Semiconductor, LCD, Electronics manufacturing

#### How to order

Code	Size	Description	Packing Unit
WW-3009	9" x 9"	Heat Sealed edges	150 pcs / 8 bags
WW-3008L	9" x 9"	Heat Sealed edges, Light-weight	
WW-3009N	9" x 9"	Heat Sealed edges	
WW-3009NPSE	9" x 9"	Heat Sealed edges	

※ Bulk packing is available

#### Technical Data

Contents		Specifications			
		WW-3009	WW-3008L	WW-3009N	WW-3009NPSE
<b>Contamination Control</b>					
Particle Count (0.5 $\mu$ m, ea/m <sup>2</sup> ) ( $\geq 0.3\mu$ m, ea)	Liquid Particle Count (per m <sup>2</sup> )	0.5 x10 <sup>5</sup>	0.7 x10 <sup>5</sup>	0.7 x10 <sup>5</sup>	-
	Air Borne Particle (per ft <sup>3</sup> )	$\leq 50$	$\leq 60$	$\leq 60$	$\leq 120$
	Lint (> 100 $\mu$ m, EA/Sh)	$\leq 25$	$\leq 30$	$\leq 30$	$\leq 30$
NVR (g/m <sup>2</sup> )	DI water	0.02	0.02	0.02	0.02
	IPA	0.1	0.1	0.1	0.1
Extractable Ions (ppm)	Na	0.3	0.25	0.25	1.5
	K	0.05	0.05	0.05	0.1
	Cl	0.05	0.01	0.01	0.5
	NO <sub>2</sub>	0.05	0.55	0.55	0.55
<b>General Characteristics</b>					
Weight (g/m <sup>2</sup> )		168 $\pm$ 17	115 $\pm$ 12	130 $\pm$ 13	100 $\pm$ 10
Absorbency	Capacity (ml/m <sup>2</sup> )	$\geq 370$	$\geq 300$	$\geq 300$	$\geq 230$
	Capacity (ml/g)	2.19	2.61	2.31	2.26
Time to sorption	(sec/6 $\phi$ )	$\leq 4$	$\leq 4$	$\leq 4$	$\leq 4$
Tensile Strength (kg.f/cm <sup>2</sup> )	MD (Machine Direction)	$\geq 150$	$\geq 150$	$\geq 150$	$\geq 150$
	CD (Cross Direction)	$\geq 150$	$\geq 100$	$\geq 100$	$\geq 100$
Thickness ( $\mu$ m)		580 $\pm$ 20	480 $\pm$ 20	500 $\pm$ 20	400 $\pm$ 20

## Polyester Clean Wipers

### Double Knit High Absorption



KM Double Knit Wiper is made of 2ply Polyester applied ultrasonic waves lamination. Absorption rate of 2ply polyester is three times faster than 1ply and double knit wiper has quick absorption speed. Heat sealed edges prevent particle or lint generation.

- Three times faster absorption in comparison with low weight and thin thickness
- High absorption rate and quick absorption speed
- Minimization of Particle and NVR Rate
- Special process for better wipe and absorption capacity



Double Knit Wiper

#### How to order

Code	Size	Description	Packing Unit
WW-3009-D	9" x 9"	Double Knit / Heat Sealed edges	100 pcs / 10 bags
WW-3012-D	12" x 12"		
WW-3018-D	18" x 18"		
WW-3009-DS	9" x 9"	Sterilized / Double Knit / Heat Sealed edges	20 pcs / 5 inner bags / 5 bags
WW-3012-DS	12" x 12"		
WW-3018-DS	18" x 18"		

#### Technical Data

Contents		Specifications
		WW-3009-D
<b>Contamination Control</b>		
Particle Count (0.5 $\mu$ m, ea/m <sup>2</sup> ) ( $\geq 0.3\mu$ m, ea)	Liquid Particle Count (per m <sup>2</sup> )	$\leq 0.7 \times 10^3$
	Air Borne Particle (per ft <sup>3</sup> )	$\leq 60$
	Lint (> 100 $\mu$ m, EA/Sh)	$\leq 30$
NVR (g/m <sup>2</sup> )	DI water	0.02
	IPA	0.1
Extractable Ions (ppm)	Na	0.6
	K	0.07
	Ca	0.08
	Mg	0
<b>General Characteristics</b>		
Weight (g/m <sup>2</sup> )		240 $\pm$ 24
Absorbency	Capacity (ml/m <sup>2</sup> )	$\geq 600$
	Capacity (ml/g)	$\geq 2.5$
Time to sorption	(sec/6 $\phi$ )	$\leq 4$
Tensile Strength (kg.f/cm <sup>2</sup> )	MD (Machine Direction)	$\geq 150$
	CD (Cross Direction)	$\geq 100$
Thickness ( $\mu$ m)		850 $\pm$ 20



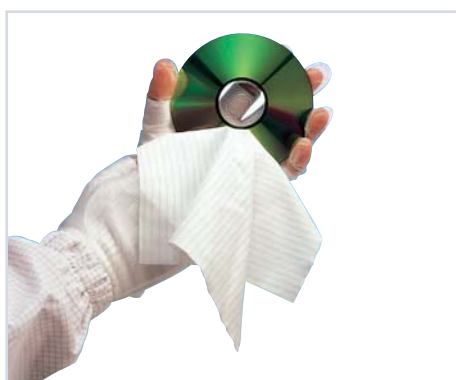




WW-5009



WW-6009



ESD / Sealed

## ESD Clean Wipers

### Heat Sealed Edge WW-5009/WW-6009



KM Sealed Edge ESD Wipers are cleanroom wipers knitted with carbon fiber or Kosilveron. Designed for the use of ESD sensitive environment, fabric makes less static build-up while wiping operation than that of conventional wipers. Its edges are also sealed for preventing particle & lint generation and laundered in the class 10 clean laundry system. ESD Wipers are supplied both 100% polyester and Micro-denier fabrics.

- Class 10 compatible clean ESD wipers
- Carbon fibers or Kosilveron are knitted in stripe line
- Laundered and packaged in the class 10 cleanroom
- Sealed edges prevent particle or lint generation
- Double bag packaging prevent cross contamination
- Applications: Class 1~10 cleanroom for Semiconductor, LCD, HDD manufacturing

#### How to order

Code	Size	Description	Packing Unit
WW-5009	9" x 9"	Polyester / Heat Sealed-edges / Carbon Fiber / ESD	100 pcs / 10 bags
WW-6009	9" x 9"	Micro-denier / Heat Sealed-edges / Carbon Fiber / ESD	

#### Technical Data

Contents		Specifications	
		WW-5009S	WW-6009S
<b>Contamination Control</b>			
Particle Count (0.5 $\mu$ m, ea/m <sup>2</sup> ) ( $\geq 0.3\mu$ m, ea)	Liquid Particle Count (per m <sup>2</sup> )	0.5 x 10 <sup>6</sup>	0.5 x 10 <sup>6</sup>
	Air Borne Particle (per ft <sup>3</sup> )	$\leq 60$	$\leq 60$
Absorbency	Capacity (ml/m <sup>2</sup> )	$\geq 370$	$\geq 350$
Time to sorption	(sec/6 $\phi$ )	$\leq 20$	$\leq 20$
Static Bulidup (V)	Before friction	27	58
	After friction	336	700
Surface Resistivity (Q /cm <sup>2</sup> )		10 <sup>8-9</sup>	10 <sup>8-9</sup>
Weight (g/m <sup>2</sup> )		160	145
Thickness ( $\mu$ m)		$\geq 570$	$\geq 400$

## Non-woven Wipers



KM Non-woven Wipers have exceptional wiping ability. With "Spunlace" technology, cellulose and polyester are entangled by high pressure water jet into a sheet structure.

This process makes wipers strong on either wet or dry condition, and friendly to aqueous wiping application, attracting much water in the wiper.

- High absorption power with no residue on wiping surface
- Cleanroom packaging guarantees cleanliness
- Minimize toxic gas when incineration
- Applications: Wiping and spill control for industrial applications including cleanroom

### How to order

Code	Size	Description	Packing Unit
WW-2106	6" x 6"	White	200 sh / 25 bags
WW-2109	9" x 9"	White	300 sh / 10 bags
WW-2112	12" x 12"	White	100 sh / 10 bags
WW-2206	6" x 6"	Blue	200 sh / 25 bags
WW-2209	9" x 9"	Blue	300 sh / 10 bags
WW-2212	12" x 12"	Blue	100 sh / 10 bags
WW-2309	9" x 9"	White / Mesh Type	150 sh / 20 bags
WW-2312	12" x 12"	White / Mesh Type	100 sh / 10 bags

### Technical Data

Contents		Specifications		
		WW-2100	WW-2200	WW-2300
Weight (g/m <sup>2</sup> )		70±7	75±7	55±6
Absorbency	Capacity (ml/m <sup>2</sup> )	≥ 300	≥ 300	≥ 330
	Capacity (ml/g)	≥ 4.3	≥ 4.0	≥ 6.0
Tensile Strength (kg.f/cm <sup>2</sup> )	MD (Machine Direction)	≥ 100	≥ 100	≥ 50
	CD (Cross Direction)	≥ 25	≥ 25	≥ 25
Elongation (%)	MD (Machine Direction)	≥ 30	≥ 30	≥ 20
	CD (Cross Direction)	≥ 100	≥ 100	≥ 50
Thickness (μm)		340±20	320±20	350±20



WW-2109



WW-2209



WW-2309



WW-2100 WW-2200 WW-2300

Comparison of fabrics



Micro-denier Clean Roll Wiper



Micro-denier Clean Roll Wiper



Non-woven Roll Wiper

## Clean Roll Wipers



KM Roll Wipers are designed for auto-cleaning media for automatic cleaning process in the controlled environment. KM Roll Wipers incorporate rolled clean wiper, made by polyester or Micro-denier or non-woven fabric. Its base material is identical with that of KM sheet type cleanroom wipers and same procedures of processing & laundering procedure. KM Non-woven Roll is customized for screen printer of PCB industry.

- Processed & packaged in ISO 9001:2008 certified Cleanroom
- Sealed edges prevent particle generation - Micro-denier & Polyester roll
- Unparalleled draping & wiping ability
- Applications: Cleaning media for auto cleaning in the controlled environment

### How to order

Code	Size	Description	Packing Unit
WW-4001134-011025	11mm x 34m	Micro-denier Roll, 2 plies	1 roll / bag
WW-4001168-011025	11mm x 68m		
WW-4001175-011025	11mm x 75m		
WW-4002050-020025	20mm x 50m	Micro-denier Roll, Single ply	
WW-4007850-078025	78mm x 50m		
WW-4009050-090025	90mm x 50m		
WW-4025050-250020	250mm x 50m		
WW-4030050-300078	300mm x 50m		
WW-4035050-350078	350mm x 50m	Polyester Roll, Single ply	
WW-3007850-078025	78mm x 50m		
WW-3009050-090025	90mm x 50m		
WW-3025050-260025	250mm x 50m		
WW-3030050-310025	300mm x 50m	Non-woven Roll	
WW-3035050-360025	350mm x 50m		
WW-2120535-205025	205mm x 35m	50 rolls	
WW-2220525-205025	205mm x 25m		

※ Most of KM Roll Wipers are custom-made. Please contact sales representative for details.

### Technical Data

Please refer to previous technical data for Sealed Edge Polyester, Micro-denier, and Non-woven

## Sterilized Clean Wipers



KM Sterilized Wipers are designed for the cleanroom applications where particles such as bacteria or fungus should be controlled in pharmaceuticals, bio industries.

With double layers polyester fabric, KM Sterilized Wipers provide exceptional cleanliness and wiping ability. Its edges are sealed with thermal, so that particles and lints are less to disperse.

- Sterilized by Gamma Ray
- Double layer structure ensures good sorption capacity
- Laundered and packaged in the class 10 cleanroom
- Sealed edges prevent particle and lint generation
- Applications: Pharmaceutical, Bio-tech, Hospital & Laboratory

### How to order

Code	Size	Description	Packing Unit
KM-5509	9" x 9"	Sterilized Polyester / Heat Sealed edges	20 pcs / 5 inner bags / 5 bags
KM-5512	12" x 12"	Sterilized Polyester / Heat Sealed edges	
KM-6509	9" x 9"	Sterilized Non-woven	10 pcs / 10 inner bags / 8 bags
KM-6612L	12" x 12"	Sterilized Non-woven	25 pcs / 6 inner bags / 7 bags

### Technical Data

Contents		Specifications		
		KM-5509	KM-6509	KM-6612L
<b>Contamination Control</b>				
Particle Count (0.5 $\mu$ m, ea/m <sup>2</sup> )	Liquid Particle Count (per m <sup>2</sup> )	0.5x 10 <sup>6</sup>	-	-
( $\geq 0.3\mu$ m, ea)	Air Borne Particle (per ft <sup>3</sup> )	$\leq 50$	300	< 500
Absorbency (mg)	Capacity (ml/m <sup>2</sup> )	$\geq 370$	$\geq 300$	> 200
	Time to sorption (sec/6 $\phi$ )	$\leq 4$	$\leq 4$	< 5
Non Volatile Residue (g/m <sup>2</sup> )	DI water	0.02	0.02	-
	IPA	0.1	-	-
Extractable Ions (ppm)	Na	0.2	-	-
	K	0.01	-	-
	Cl	0.3	-	-
	NO <sub>3</sub>	0.01	-	-
Tensile Strength (kg.f/cm <sup>2</sup> )	MD (Machine Direction)	$\geq 150$	$\geq 100$	> 80
	CD (Cross Direction)	$\geq 100$	$\geq 25$	> 50
Weight (g/m <sup>2</sup> )		168 $\pm$ 17	70 $\pm$ 7	60 $\pm$ 5
Thickness ( $\mu$ m)		580 $\pm$ 20	340 $\pm$ 20	290 $\pm$ 50



Sterilized, Polyester



Sterilized, Non-woven



## Presaturated Wipers



Next generation wipers using the proper amount of chemical to prevent excessive use were manufactured in improved environment with simplified process. Particles generated on wiper edges are minized. Wipers are designed to be used in Class 1~10. Particle, NVR and extractable Ions are under strict management.



KM-4008L[E]



KM-4008L[I]

- Laundered and Packaged in the Cleanroom (Certified ISO 9001:2008)
- Guaranteed quality from manufacturing to shipping
- Excellent absorption capacity and rate
- Packed in 3 Layer bags for superior chemical resistance
- Contains 3 zippers to prevent from Leaking
- Convenient sealing with Slider Zipper
- Can be used with all kinds of wipers
- Can be used with a variety of Chemicals
- Fused edges to minimize lint and particle generation
- Easy-to-use
- Cost reduction in the amount used of Chemical
- Improved manufacturing environment
- Decreased chemical waste

### How to order

Code	Size	Description	Packing Unit
KM-4008L[E]	8" x 8"	Polyester/4-side Ultra Sealed Edges/Ethanol	25 pcs / 4 bags
KM-4008L[I]	8" x 8"	Polyester/4-side Ultra Sealed Edges/IPA	
WW-3009[E]	9" x 9"	Polyester/Heat Sealed edges/Ethanol	
WW-3009[I]	9" x 9"	Polyester/Heat Sealed edges/IPA	
WW-3012-D[E]	12" x 12"	Polyester Double Knit/Heat Sealed edges/Ethanol	
WW-3012-D[I]	12" x 12"	Polyester Double Knit/Heat Sealed edges/IPA	20 pcs / 5 bags
WW-3009[E]-S	9" x 9"	Sterilized Polyester/Heat Sealed edges/Ethanol	
WW-3009[I]-S	9" x 9"	Sterilized Polyester/Heat Sealed edges/IPA	

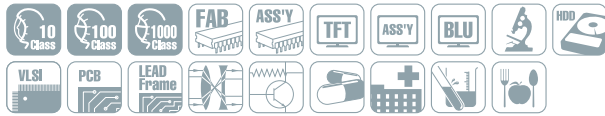
※ Applicable Wipers : Polyester, Micro-denier, Non-woven & etc

※ Applicable Chemical : Ethanol, IPA, DI Water & etc

### Technical Data

Contents		Specifications
		KM-4008L[E]
Particle Count (0.5 $\mu$ m, ea/m <sup>2</sup> )	Liquid Particle Count(per m <sup>2</sup> )	0.7x10 <sup>6</sup>
NVR (g / m <sup>2</sup> )	DI water	0.02
	IPA	0.10
Extractable Ions (ppm)	Na	0.60
	K	0.15
	Cl	1.20
	NO <sub>2</sub>	0.03
Weight (g / m <sup>2</sup> )		168 $\pm$ 17
Absorbency (mg)	Capacity (ml / m <sup>2</sup> )	$\geq$ 370
	Efficiency (ml / g)	$\geq$ 2.20
	Speed (sec / 6 $\phi$ )	$\leq$ 4
Tensile Strength (kg.f/cm <sup>2</sup> )	MD (Machine Direction)	$\geq$ 150
	CD (Cross Direction)	$\geq$ 150
Thickness ( $\mu$ m)		580 $\pm$ 20

## ECO Wipers



Problems of wipers generating non-volatile residue(NVR) from the textile material and other contaminants when wetted by the chemicals (Acetone, NMP, PGMEA and etc) for a long period of time have been improved. Particles minized on wiper edges.

Wipers are designed to be used in Class 1~10. Particle, NVR and extractable Ions are under strict management.

- Laundered and Packaged in the Cleanroom (Certified ISO 9001:2008)
- Guaranteed quality from manufacturing to shipping
- Excellent absorption capacity and rate
- Packed in 3 Layer bags for superior chemical resistance
- Contains 3 zippers to prevent from Leaking
- Convenient sealing with Slider Zipper
- Can be used with all kinds of wipers
- Can be used with a variety of Chemicals
- Fused edges to minimize lint and particle generation
- Easy-to-use
- Cost reduction in the amount used of Chemical
- Improved manufacturing environment
- Decraesed chemical waste
- Guaranteed quality by introducing U/F System
- Enhanced safety by using Filling bags



KM-4008L[A]

### How to order

Code	Size	Description	Packing Unit
KM-4008L[A]	8" x 8"	Polyester/4-side Ultra Sealed Edges/Aceton	25 pcs / 4 bags
KM-4008L[N]	8" x 8"	Polyester/4-side Ultra Sealed Edges/NMP	
KM-4008L[P]	8" x 8"	Polyester/4-side Ultra Sealed Edges/PGMEA	
KM-4008L[A]-S	8" x 8"	Sterilized Polyester/4-side Ultra Sealed Edges/Aceton	20 pcs / 5 bags
KM-4008L[N]-S	8" x 8"	Sterilized Polyester/4-side Ultra Sealed Edges/NMP	
KM-4008L[P]-S	8" x 8"	Sterilized Polyester/4-side Ultra Sealed Edges/PGMEA	

※ Applicable Wipers : Polyester, Micro-denier, Non-woven & etc

※ Applicable Chemical : Ethanol, IPA, DI Water & etc

### Technical Data

Contents		Specifications
		KM-4008L[A]
<b>Contamination Control</b>		
Particle Count (0.5 $\mu$ m, ea/m <sup>2</sup> ) ( $\geq 0.3\mu$ m, ea)	Liquid Particle Count (per m <sup>2</sup> )	0.4x 10 <sup>6</sup>
	Air Borne Particle (per ft <sup>3</sup> )	$\leq 20$
NVR (g/m <sup>2</sup> )	DI water	$\leq 0.02$
	IPA	$\leq 0.10$
Extractable Ions (ppm)	Na	$\leq 2.0$
	K	$\leq 2.0$
	Cl	$\leq 2.0$
	NO <sup>2</sup>	$\leq 2.0$
Weight (g/m <sup>2</sup> )		168 $\pm$ 17
Absorbency (mg)	Capacity (ml/m <sup>2</sup> )	$\geq 370$
	Efficiency (ml/g)	$\geq 2.20$
	Speed (sec/6 $\phi$ )	$\leq 4$
Tensile Strength (kg.f/cm <sup>2</sup> )	MD (Machine Direction)	$\geq 150$
	CD (Cross Direction)	$\geq 150$
Thickness ( $\mu$ m)		580 $\pm$ 20





Sheet type



Block type

## PVA Wipers



KM PVA Wipers are developed especially for wet cleaning applications in the controlled environment. Comparing to conventional polyester or non-woven wipers, PVA offers better absorbent power and wiping ability. Ideal for water spill control or liquid-based cleaning, KM PVA Wipers absorb and hold water or liquid 12~18 times higher than its own weight.

- Complete opened cell structure
- High absorbent power and good wiping ability
- Reusable & launderable
- Soft & flexible
- Good chemical resistance
- Applications: Wiping & spill control from general industries to cleanroom operations

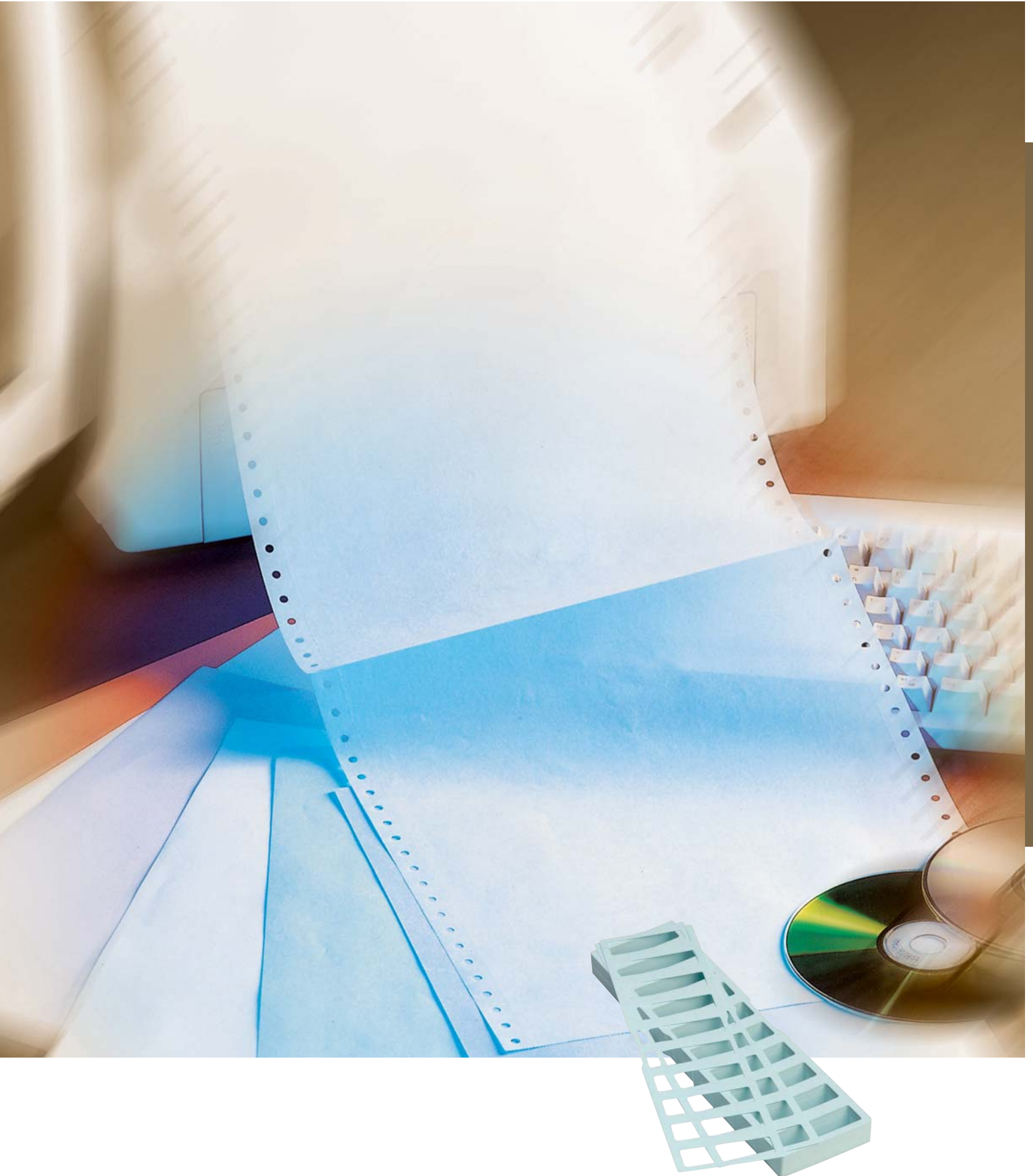
### How to order

Code	Size	Description	Packing Unit
WW-1209	9" x 9"	Sheet type, 2mm (T)	10 pcs / 20 bags
WW-1309	130mm x 80mm	Block type, 30mm (T)	1 pc / 50 bags

### Technical Data

Contents	Specifications
Material	Poly Vinyl Alcohol Form
Pore Size ( $\mu\text{m}$ )	60~2000
Pore Ratio (%)	88~94
Tensile Strength ( $\text{kg}/\text{cm}^2$ )	2~6
Absorbent Capacity (wt %)	800~1200
Absorbent Speed (sec./cm)	2~5
Melting Point ( $^{\circ}\text{C}$ )	180

# STATIONERY





# STATIONERY

## Clean Paper Products



KM Clean Paper Product is specially designed for writing, printing and photo-copying in the cleanroom environment. Through polymerization process, fiber, lint and particulates are tightly bound into the sheet, and decrease electro-static buildup, which will eventually minimize scrap rate of copier. KM Clean Paper Product provides a variety of color and size such as notebook, printer form, memo pad, chart paper etc.

- Significantly reduced particle counts
- Enhanced ink reception for clear printing
- Decrease scrap rate of copier or printer
- Provide any kind of style, size and color
- Lined type notebook : Minimize particle from holes
- Spiral type notebook : Polypropylene hard cover
- Clean-it : easily stick to any surfaces and leaves no adhesive residue after removal
- Chart Paper: Measuring chart paper for strip chart, thermal array and oscillographic recorders(Specially used Yokogawa recorder)
- Applications: Writing or printing media in the cleanroom

### How to order

Code	Size	Description	Packing Unit
Papers	KMCP-72BA4	72g / A4	250 pcs / 10 bags
	KMCP-80BA4	80g / A4	
	KMCP-100BA4	100g / A4	
	KMCP-72BA3	72g / A3	250 pcs / 5bags
	KMCP-72BLT	72g / Letter	250 pcs / 10 bags
Notebooks	KMCN-72A42	72g / A4 20P Lined	10 pcs / bags
	KMCN-72B52	72g / B5 20P Lined	
	KMCS-72A45	72g / A4 50P Spiral	5 pcs / 10 bags
	KMCS-72A55	72g / A5 50P Spiral	10 pcs / 10 bags
Anti-static PVC cover	A4	72g / A4 10P Lined	10 pcs / 10 bags
	A5	72g / A5 20P Lined	
Clean-it	KMCI-23	2" x 3"	50 layer / pad
	KMCI-33	3" x 3"	
	KMCI-43	4" x 3"	

※ Available Paper Colors : White, Sky-blue, Yellow, Green, Pink, Orange,Jade, L/Violet, L/orange

※ Available Size : A4(210X297mm), A5(148X210mm), B4(257X364mm), B5(182X257mm), Letter(216X297mm), 80Column(9.5"X11"), 132Column(15"X11")

### Technical Data

Contents		Specifications		
Weight (g/m <sup>2</sup> )		72	80	100
Thickness (μm)		98	110	130
Particle Count (pcs=0.1~1 μm <sup>3</sup> )	Crumpling	<10	<10	<10
	Rubbing	<10	<10	<10
	Tearing	<10	<10	<10
Static Build-up (v/cm <sup>2</sup> )	Before Friction	<20	<20	<20
	After Friction	<50	<50	<50
Surface Resistivity (Ω /m <sup>2</sup> )		2.3 × 10 <sup>11</sup>	2.3 × 10 <sup>11</sup>	2.3 × 10 <sup>11</sup>
Extractable Ions (ppm)	Na	2.3	2.3	2.3
	Cl	<0.5	<0.5	<0.5
	NO <sup>3</sup>	<0.04	<0.04	<0.04
	K	<0.02	<0.02	<0.02
	SO <sub>4</sub> <sup>2-</sup>	<2	<2	<2



Papers



Clean-it



Notebooks



Anti PVC Note Cover

## Video Print Paper



KM Video Printer Paper is the special paper needed for thermal printing attached to recorder or instruments with high resolution in the controlled environment. This kind of special paper can be applied for photo quality printing for micro-circuit layout at semiconductor design process or ultra-sonic scan data at medical applications.

- Provide all kind of print paper from general RS printer to high-resolution color printer
- Enhanced resolution for professional photo printing
- Customized paper is available
- Extremely low particle and extractable ion
- Applications: Thermal printing paper in the cleanroom or hospital



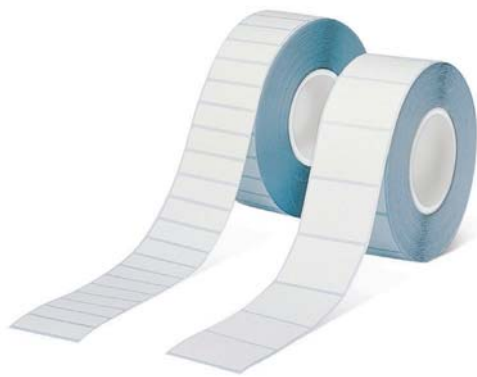
Video Print Paper

### How to order

Code	Description (W x L x I.D)	Packing Unit
CCBP-2549	57mm×20m×12mm dia	5 rolls / 20 Inner box
CCBP-2645	60mm×20m×12mm dia	
CCBP-1345	110mm×20m×12mm dia	5 rolls / 10 Inner box
CCBP-1760	216mm×20m×25mm dia	5 rolls / 5 Inner box

### Technical Data

Contents		Specifications
Particle Count (Dry method, pcs > 0.3 $\mu$ m/m <sup>3</sup> )		< 10
Static Build-up (v / cm <sup>2</sup> )	Before friction	77
	After friction	293
Extractable Ions (ppm)	K	0.05
	NO <sub>2</sub>	0.01
	Na	0.2
	CL	0.4
Weight (g / m <sup>2</sup> )		58.6
Thickness ( $\mu$ m)		150



Clean Paper Roll Label

## Clean Paper Roll Label



KM Clean Paper Roll Label is the cleanroom label for the purpose of either memo & data writing or bar coding on wafer carrier or Box. It is specially made as clean paper.

So Enhanced ink reception for clear writing and high-resolution color printer.

KM Clean Paper Roll Label leaves no adhesive residue on surface when the label is removed.

- Special glue leaves no residue on surface after removal
- Enhanced ink reception for clear printing
- Minimized particle and Ion
- Applications: Wafer carrier or data writing in the cleanroom

※ Customized size is available. Please ask for details to the sales representative.



Clean Roll Label

## Clean Roll Label



KM Clean Label is the cleanroom label for the purpose of either memo & data writing or bar coding on wafer carrier or box. Particle-free Yupo film with Acrylic glue minimizes contamination and free from unwanted adhesive residue after label is taken away. The film is also chemically treated for bar code printing, so the recognition error from reader has been minimized.

- Cleanroom processed
- Particle-free Yupo film
- Acrylic glue leaves no residue after label removal
- Enhanced ink reception for clear writing or printing
- Applications: Labeling purpose in the cleanroom

### How to order

Code	Size	Description	Packing Unit
KMCR-L01	3.0" x 1.75"	Yupo. removal	12 rolls / box
KMCR-L02	4.25" x 2.75"		5 rolls / box

※ Customized size is available. Please ask for details to the sales representative.

## ESD Clip Board



KM ESD Clip Board is designed for the use of cleanroom applications. Made of anti-static polypropylene board and chrome plated clip, KM ESD Clip Board generates less particles, decreasing static buildup caused by either paper or human. UV treated clean board also prevents scratch by pen or materials in actual use.

- Cleanroom compatible polypropylene
- Anti-static board decreases static buildup:  $10^6 \sim 10^8$
- Rust-proof chrome finishing on clip board
- UV coated clean surface minimizes scratches
- Applications: Form or paper clip board for cleanroom



ESD Clip Board

### How to order

Code	Size	Description	Packing Unit
CL-01	A4	Anti-static Polypropylene Clip Board	1pcs

## Tape



KM Tape is specially made for the taping purpose in the cleanroom environment. Unlike industrial tapes, KM Tape leaves no adhesive residue on surface after tape removes. Its PVC films are so flexible and elastic, it can be applied on crooked or winded surface without the worry of breakage of PVC tape.

- Dust-free cleanroom tape
- Special adhesive leaves no residue after removal
- Highly flexible & elastic PVC film
- Non-metallic material minimize out-gassing
- Applications: Taping wall or color coding in the cleanroom



Tape

### How to order

Code	Size	Description	Packing Unit
CT-01	1"×36 yards	PVC Adhesive Tape	60 rolls/box
CT-02	2"×36 yards		30 rolls/box

※ Applicable Materials : PVC, PE, PO



Lead Frame Insert Paper

## Lead Frame Insert Paper



- An exclusive dust-free paper for a cleanroom use
- Minimization of particles due to treating exclusive substance on the surface
- A ultra-clean product (paper) that minimizes the ion generated
- Minimization of variation caused by a change of temperature and humidity

※ Various size and weight are available



Mouse Pad

## Mouse Pad

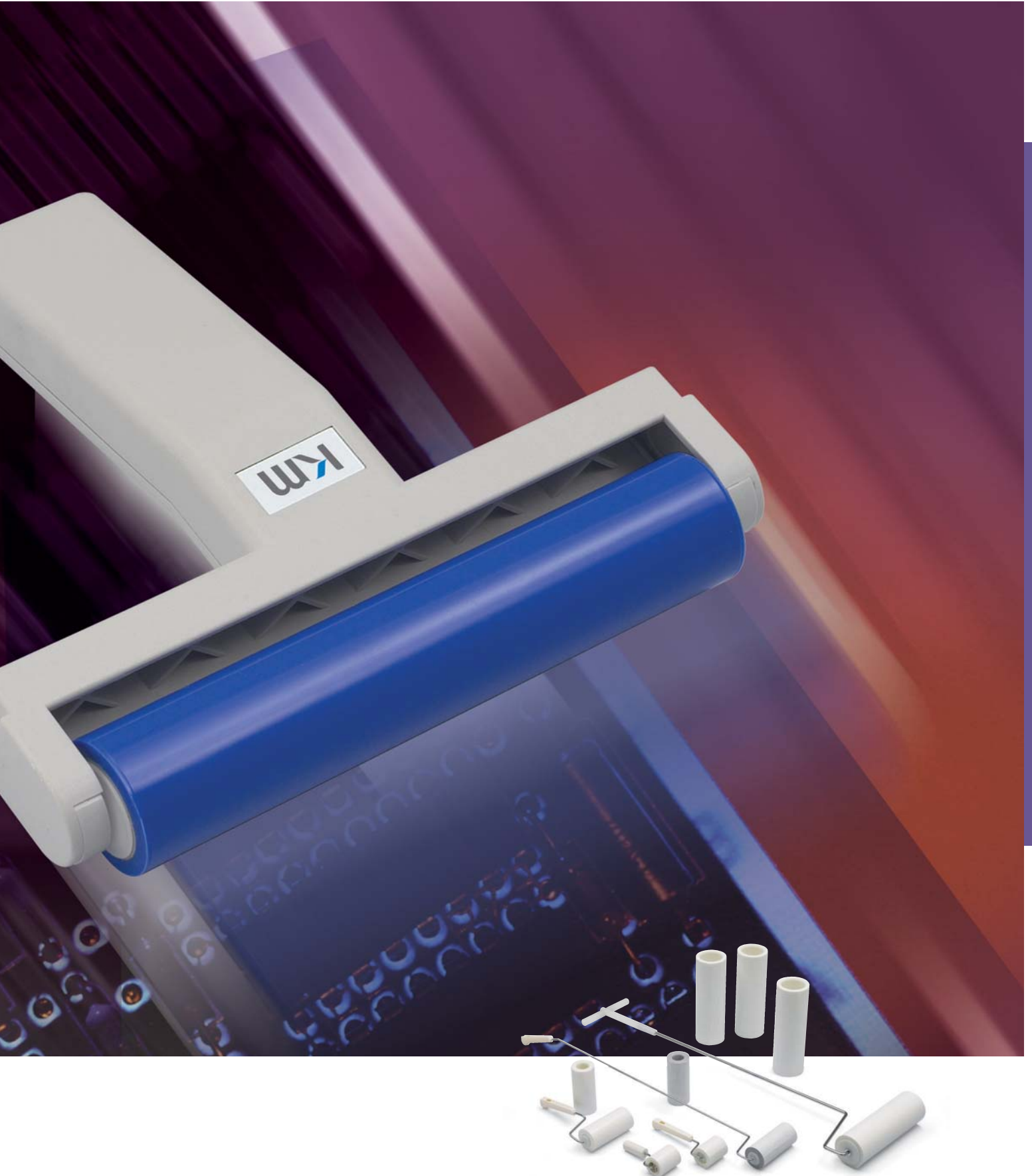


KM Mouse Pad have a preventive effect for the static electricity by blending technology of synthetic rubber and Anti-static PVC Sheet

Size: 220mm x 180mm  
190mm x 150mm

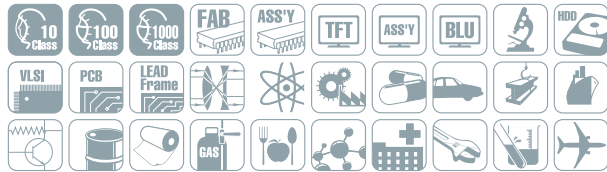


# CLEANERS



# CLEANERS

## Sticky Mat



KM Sticky Mats made of polyethylene film with adhesive are used for removing foot borne particulates before entering the cleanroom. Advanced chemical formulated adhesives hold the particulates on the sheet that protect additional contamination from the shoe sole as much as possible.

When the exposed layer is completely used, simply peel it off to expose a clean layer.

- Provides variety of sizes, colors and styles
- Mirco PE film prevents an accident by cart or human
- Numbered corner tab for easy identification
- No adhesive residue on shoe's sole
- Sanitized adhesive film available for Medical environmental.
- Applications: Cleanrooms, Labs, Medical environmental, Any other dust free environment.

### How to order

	Code	Descriptions	Packing Unit
Standard	WM-1845	30 layers, 18" x 45"	8 or 10 pads / carton
	WM-2436	30 layers, 24" x 36"	
	WM-2645	30 layers, 26" x 45"	
	WM-3660	30 layers, 36" x 60"	
	WM-1845D	60 layers, 18" x 45"	
	WM-2436D	60 layers, 24" x 36"	
	WM-2645D	60 layers, 26" x 45"	
	WM-3660D	60 layers, 36" x 60"	
Water Base	WM-1845	30 layers, 18" x 45"	
	WM-2436	30 layers, 24" x 36"	
	WM-2645	30 layers, 26" x 45"	
	WM-3660	30 layers, 36" x 60"	
Anti-Bacterial	WM-2436B	30 layers, 24" x 36"	
	WM2436BD	60 layers, 24" x 36"	

※ Color available : Blue, White, Gray & Green  
Customized color available

### Technical Data

Contents		Specifications		
		Standard	Sanitized	Water Base
Adhesive Strength (g)	Normal	350 ± 50	←	250 ± 50
	High	450 ± 50	←	—
Tensile Strength	Width (mg / mm <sup>2</sup> )	> 1.5	←	←
	Length (kg / mm <sup>2</sup> )	> 1.5	←	←
Chemical Resistance	Sodium Hydroxide	Good	←	Good
	Methanol	Good	←	Good
	Nitric Acid	Fair	←	Fair
	Sulfuric Acid	Fair	←	Fair
	Toluene	Poor	←	Poor
Bacterial Inhibition (pcs. after 24hrs.)	E-Coli (initial:7.6 x 10 <sup>3</sup> )	5.3 x 10 <sup>5</sup>	4.0 x 10 <sup>3</sup>	5.3 x 10 <sup>5</sup>
	S.aureus (initial:7.0 X 10 <sup>3</sup> )	4.2 x 10 <sup>5</sup>	8.3 x 10 <sup>3</sup>	4.2 x 10 <sup>5</sup>
Dimension (mm)	Width	± 3	←	←
	Thickness	0.050 ± 0.005	←	0.035 ± 0.005



Sticky Mat



Mat Frame



Anti-Bacterial

## Sticky Roller



This roll type adhesive cleaner is most efficient means removing contaminants on flat surface at industrial cleaning applications such as PCB, BLU and LCD.

This cleaner is composed of reusable roller handle and disposable roller refill that contains adhesive for removing particulates. Perforated cutting line makes it easy to peel off the soiled film and expose a clean one.

For ESD sensitive area, antistatic types are available

- Advanced adhesive formulation
- Anti-static type available:  $10^{10} \sim 10^{11} \Omega/\text{m}^2$
- Application: Parts, Products and machine cleaning

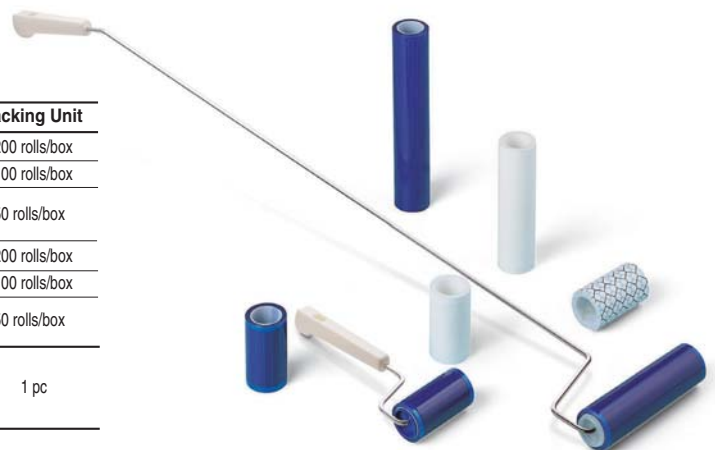
### How to order

	Code	Size (W x L)	Description	Packing Unit
Refill Tape	KMSR-100	100mm x 20m	Standard PE film 50 sh/roll	200 rolls/box
	KMSR-200	200mm x 20m		100 rolls/box
	KMSR-300	300mm x 30m		50 rolls/box
	KMSR-400	400mm x 40m		
	KMSR-110	100mm x 20m	200 rolls/box	
	KMSR-210	200mm x 20m	100 rolls/box	
	KMSR-310	300mm x 30m	50 rolls/box	
	KMSR-410	400mm x 40m		
Roller Handle	KMCH-11	80mm x 255mm x $\phi$ 38	For 100mm	1 pc
	KMCH-12	160mm x 295mm x $\phi$ 38	For 200/300/400mm	
	KMCH-13	160mm x 1.075mm x $\phi$ 38		

※ Color available : Blue, White

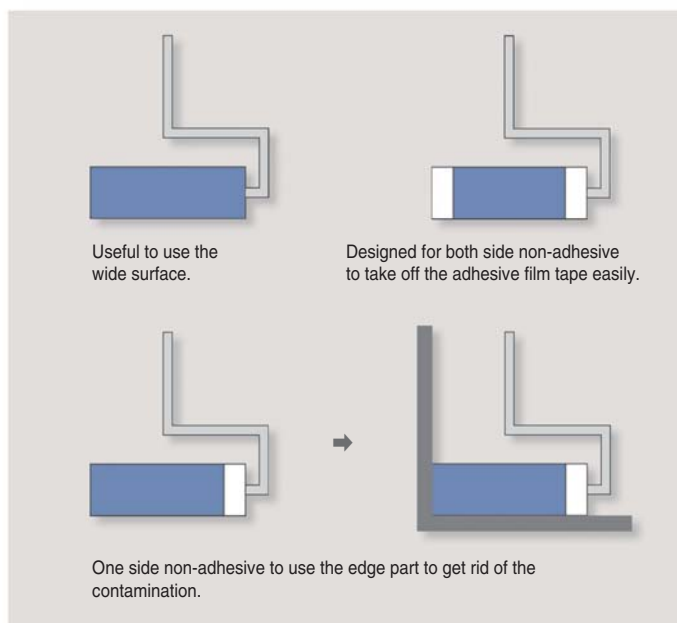


Adhesive Film Tape



Sticky Roller

### Cite an instance of the adhesion type and use





Clean Roller



## Clean Roller



KM clean roller is most efficient means removing contaminants at industrial applications.

This cleaner is composed of reusable roller handle and adhesive roll film. By specially formulated adhesive on the film, KM Clean roller keeps proper adhesive strength that leaves no residue on the cleaned area.

- Advanced adhesive formulation
- Perforated film for easy peel off
- Yupo, PU or PE coated Non woven film
- Application: Parts, Products and machine cleaning

### How to order

#### Refill Tape

Code	Size (W x L)	Description	Packing Unit
KMCR-80N15	80mm x 15m	PE coated Non-woven	30 rolls / box
KMCR-80N	80mm x 20m		
KMCR-160N	160mm x 20m		
KMCR-320N	320mm x 20m	ESD, PE coated Non-woven	10 rolls / box
KMCR-80EN15	80mm x 15m		30 rolls / box
KMCR-80EN	80mm x 20m		
KMCR-160EN	160mm x 20m		
KMCR-320EN	320mm x 20m	Yupo	10 rolls / box
KMCR-80Y	80mm x 20m		30 rolls / box
KMCR-160Y	160mm x 20m		10 rolls / box
KMCR-320Y	320mm x 20m	PU	30 rolls / box
KMCR-80U15	80mm x 15m		
KMCR-80U	80mm x 20m		
KMCR-160U	160mm x 20m		
KMCR-320U	320mm x 20m		10 rolls / box

PE coated Non-Woven(N) : Desk & Floor Cleaning

YUPO(Y) : Part Cleaning

PU(U) : LCD Film, Part Cleaning

#### Roller Handle

Code	Size (W x L)	Description	Packing Unit
KMCH-11	80mm x 255mm x $\phi$ 38	For 80mm	1 pc
KMCH-12	160mm x 295mm x $\phi$ 38	For 160mm, Short type	
KMCH-13	160mm x 1,075mm x $\phi$ 38	For 160mm, Long type	
KMCH-14	350mm x 1,200mm x $\phi$ 77	For 320mm	

## DCR Roller



KM DCR Roller is designed to remove contamination from printed circuit boards and other flat items. Also roller can be refilled.

### How to order

Code	Description	Packing Unit
KMDCR-K6	6"	1 set
KMDCR-K12	12"	
KMDCR-K6R	Refill, 6"	1 pc
KMDCR-K12R	Refill, 12"	
KMDCR-K6H	Handle, 6"	
KMDCR-K12H	Handle, 12"	



KM DCR Roller 6"



KM DCR Roller 12"

## DCR Pad



The adhesive paper is for removing particles on the surface of DCR Roller. Two sizes are available and it can improve efficiency as using appropriate size according to the Roller.

### How to order

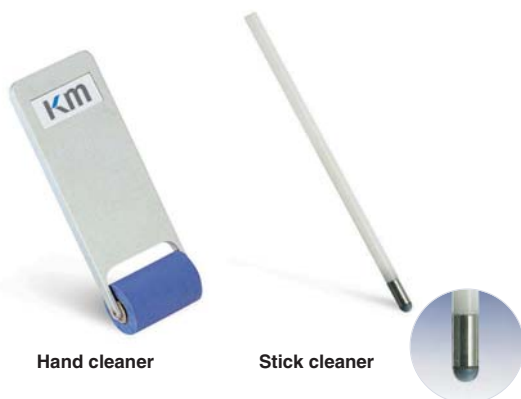
Code	Description	Packing Unit
KMDCR-240330	240mm x 330mm	50 sh / 5 pads / 1 box
KMDCR-165240	165mm x 240mm	50 sh / 10 pads / 1 box



KM DCR Pad



## DCR Hand Cleaner & Stick Cleaner



Hand cleaner

Stick cleaner

KM DCR Hand & Stick Cleaner are used for cleaning dust in narrow gap on PCB where is difficult to be cleaned with general cleaners.

This butyl roller manufactured with high technology using viscosity of the roller can get rid of minute dust on the surface of PCB.

- Reusable as it is washable with water
- Easy cleaning for small and narrow part
- High durability

### How to order

#### Stick Cleaner

Code	Description	Packing Unit
KMDCR-5A	125mm(L) x 5φ, Tip: 15mm(H) x 5φ	10 pcs / i.box
KMDCR-5B	125mm(L) x 5φ, Tip: 15mm(H) x 5φ	
KMDCR-5A Refill	Rubber Tip refill with standard viscosity	
KMDCR-5B Refill	Rubber Tip refill with standard viscosity	
KMDCR-5 Stick	Stick, 125mm(L) x 5φ	

#### Hand Cleaner

Code	Description	Packing Unit
KMDCR-30A	42mm(W) x 118mm(H) x 20φ, Roller: 30mm(W) x 20φ	10 pcs / i.box
KMDCR-30B	42mm(W) x 118mm(H) x 20φ, Roller: 30mm(W) x 20φ	
KMDCR-30A Refill	Rubber Roller refill, Standard, 42mm(W) x 118mm(H)	
KMDCR-30B Refill	Rubber Roller refill, Strong, 42mm(W) x 118mm(H)	
KMDCR-30 Handle	Handle, 42mm(W) x 118mm(H)	
KMDCR-50	62mm(W) x 115mm(H) x 30φ, Roller: 53mm(W) x 30φ	1 pc / i.box
KMDCR-50 Refill	Rubber Roller refill, 53mm(W) x 30φ	
KMDCR-50 Handle	Handle, 62mm(W) x 115mm(H)	

## SWAB



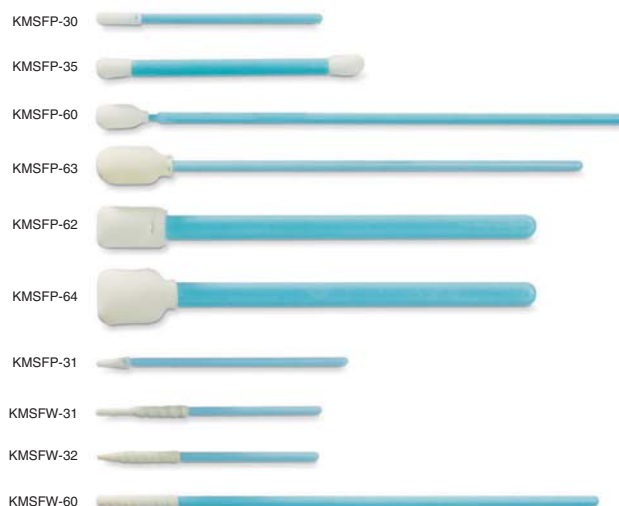
KM Swabs are designed for superior cleanliness and consistency for a wide range of applications

- 100% Polyurethan Foam & Polyester Tips
- Thermal Bonding treatment
- Excellent Chemical & Abrasion resistance
- Extremely soft and very low extractables

## How to order

Code	Tip	Size (tip)	Length	Packing
KMSFP-30	Foam, P.P	3mm x 13mm	68mm	100 pcs/bag 50 bags/l.box, 12 l.boxes/cs
KMSFP-35		5mm x 10mm	77mm	100 pcs/bag 30 bags/l.box, 12 l.boxes/cs
KMSFP-60		6mm x 17mm	163mm	100 pcs/bag 10 bags/l.box, 12 l.boxes/cs
KMSFP-62		11mm x 23mm	148mm	
KMSFP-63		11mm x 22mm	134mm	50 pcs/bag 8 bags/l.box, 12 l.boxes/cs
KMSFP-64		15mm x 25mm	132mm	
KMSFP-31		4mm x 10mm	68mm	
KMSFW-31		2.5mm x 22mm	68mm	100 pcs/bag
KMSFW-32		3mm x 22mm	68mm	50 bags/l.box, 12 l.boxes/cs
KMSFW-360		4mm x 25mm	153mm	
KMSPP-31	Polyester, P.P	3mm x 13mm	68mm	100 pcs/bag 50 bags/l.box, 12 l.boxes/cs
KMSPP-60		3mm x 17mm	163mm	100 pcs/bag 10 bags/l.box, 12 l.boxes/cs
KMSPP-61		8mm x 20mm	153mm	100 pcs/bag 8 bags/l.box, 12 l.boxes/cs
KMSMP-60	Micro- denier, P.P	3mm x 17mm	163mm	100 pcs/bag 10 bags/l.box, 12 l.boxes/cs
KMSFP-30E	Foam ESD, P.P	3mm x 13mm	68mm	100 pcs/bag 50 bags/l.box, 12 l.boxes/cs
KMSFP-60E		6mm x 17mm	163mm	100 pcs/bag 10 bags/l.box, 12 l.boxes/cs
KMSPP-30E	Polyester, ESD P.P	3mm x 13mm	68mm	100 pcs/bag 50 bags/l.box, 12 l.boxes/cs
KMSPP-60E		6mm x 17mm	163mm	100 pcs/bag 10 bags/l.box, 12 l.boxes/cs
KMSNW-30	Non-woven, P.P	4mmx22mm	68mm	100 pcs/bag 50 bags/l.box, 12 l.boxes/cs
KMSH-113	Cotton, Pulp	2.6mm (±0.4) x 14mm (±0.5)	75mm (±0.5)	25 pcs/bag 100bags/l.box, 20 l.boxes/cs
KMSH-114		3.2mm (±0.5) x 14mm (±0.5)	75mm (±0.5)	20 pcs/bag 100bags/l.box, 15 l.boxes/cs
KMSH-122		2.2mm (±0.5) x 7mm (±0.5)	75mm (±0.5)	25 pcs/bag 100bags/l.box, 20 l.boxes/cs
KMSH-123		3.0mm (±0.4) x 11mm (±0.5)	78mm (±0.5)	
KMSH-214		4.4mm (±0.4) x 15mm (±0.5)	75mm (±0.5)	
KMSH-225		4.7mm (±0.4) x 11mm (±0.5)	82mm (±0.5)	20 pcs/bag 50 bags/l.box, 20 l.boxes/cs

## Foam Swab



## Polyester Swab



## ESD Shaft Swab



## Non-woven Swab



## Cotton Swab





MC-01, PVA Pulp Cleaner



MC-02, Non-woven cleaner



MC-03 Polyester/cotton Cleaner

## Mops



It is used to remove particulate or dust on the floor, the wall and ceiling in cleanroom environment or general working surroundings.

In accordance with the applications, PVA pulp, Non-woven or Polyester / Cotton are available

### MC-01

- Excellent absorbency & absorption of PVA Pulp Cleaner
- Cleaning & reuse with water are available
- The length of the handle is adjustable
- Application: Cleaning for Floor, Wall and Ceiling in the cleanroom



### MC-02

- The high closeness on the surface of non-woven cleaner by the protrusion structure of rubber bottom board
- Using with static electricity, it can be cleaned by sticking to the bottom of non-woven cleaner
- The length of the handle is adjustable
- Application: Cleaning for Floor, Wall and Ceiling in the general working surroundings & smock rooms



### MC-03

- The high closeness on the surface of Polyester / Cotton Cleaner by the protrusion structure of rubber bottom board
- The length of the handle is adjustable
- Application: Cleaning for Floor, Wall and Ceiling in the general working surroundings & smock rooms

#### How to order

	Code	Description
Mops	MC-01	PVA Pulp Cleaner
	MC-02	Non-woven Cleaner
	MC-03	Polyester / Cotton Cleaner
Floor Cloth	FC-250100	Floor cloth, 250mm x 100mm (for MC-02)
	FC-340110	Floor cloth, 340mm x 110mm (for MC-03)

## Cleanroom Sterilizable Mops



It is specially designed to be used in tightly controlled environment and generate low particle to adapt the class 10.

This mop has excellent chemical resistance and is available for Autoclave, UV, Gamma ray to sterilize.

In addition, it has super absorbency capacity with a inserted microfiber cloth.

### Flat Mot

- Edgeless tubular cord by special knitting machine
- Edgeless tubular cord yarn is made of continuous high-multi micro polyester
- Super absorbency low lint features and strong chemical resistance for sterile and critical cleaning environments
- Washable for reuse

#### How to order

Code	Size	Description	Packing Unit
DM-F40L-L	11.5cmX41cm	Polyester Microfiber (Tubular cord yarn)	50 pcs/ctn
DM-EM-40-L	11.5cmX40.5cm	Polyester Embo	100 pcs/ctn
DM-WM40-L	11.5cmX40.5cm	Polyester	100 pcs/ctn
MLN-SP40	12.5cmX43cm	Polyester Microfiber	80 pcs/ctn
MLN-SP40-4F	12.5cmX43cm	Polyester Microfiber	50 pcs/ctn
SUS Frame	10cmX40cm	Stainless Steel	1 pc/bag

### Wall & Ceiling Mop

- Edgeless tubular cord by special knitting machine
- Edgeless tubular cord yarn is made of continuous high-multi micro polyester
- Used for cleaning wall, ceiling, window and corner
- Super absorbency low lint features and strong chemical resistance for sterile and critical cleaning environments
- Washable for reuse

#### How to order

Code	Size	Description	Packing Unit
DM-W40S-L	7.0cmX38cm	Polyester Microfiber (Tubular cord yarn)	1 pc/bag
T Frame	40cm	PP	



DM-F40L-L



SUS Frame



DM-W40S-L



T Frame



DM-WM370L-L



WET Frame

## Wet Mop

- Edgeless tubular cord by special knitting machine
- Edgeless tubular cord yarn is made of continuous high-multi micro polyester
- It enables to clean a wide area in the Cleanroom
- Designed for absorbing considerable amount of water
- Super absorbency low lint features and strong chemical resistance for sterile and critical cleaning environments
- Washable for reuse

### How to order

Code	Size	Description	Packing Unit
DM-WM370L-L	16cmX76cm	Polyester Microfiber (Tubular cord yarn)	1 pc/bag
WET Frame	17cm	PP	

## Handle

### How to order

Code	Size	Description	Packing Unit
Aluminium Handle	77-130cm	Aluminium	1 pc/bag
SUS Handle	85-150cm	Stainless	

※ Aluminium: Autoclave, Gamma, UV are applicable

※ Stainless: Gamma, UV are applicable



Aluminium Handle



SUS Handle



# GARMENTS





# GARMENTS

## Garment Fabrics

KM Garment Fabrics provide customized solutions for each application which needs of protective apparels from low to high-grade cleanroom manufacturing. KM Garment Fabric offer effective filtration barrier to catch & trap human-borne particles. Capturing micro-sized contaminants inside the fabric, it also has good air & moisture permeability, so the comfort is not sacrificed.

- All kind of fabrics for cleanroom applications
- Effective filtration media for contamination control
- Carbon yarns from Kanebo or BASF
- Good air & moisture permeability
- Large stocks & fast delivery
- Applications: Fabrics for all kind of cleanroom apparels



### How to order

Code	Filament	Weaving Structure	Pattern	Remark
KMCC-10121K	90 P / 10 CA	Knitted - 4Bar	5 D	ESD
KMCC-10121B				
KMCC-10222K	98.5 / 10 CA	Plain (1up / 1down)	5 C	
KMCC-10222B				
KMCC-10253K	100 P	Plain (1up / 1down)	20 S	
KMCC-10253B				
KMCC-30121K	90 P / 10 CA	Knitted - 4Bar	5 D	Mesh
KMCC-30121B				
KMCC-33322K	75 P / 100 P	Twill (2up / 1down)	5 C	PU Coated
KMCC-33322B				
KMCC-33323K	75 P / 100 P	Twill (2up / 1down)	5 S	
KMCC-33323B				
KMCC-33353K	75 P / 100 P	Twill (2up / 1down)	20 S	
KMCC-33353B				
KMCC-33412K	75 P / 75 P	Twill (3up / 2down)	2.5 C	
KMCC-33412B				
KMCC-33422K	75 P / 75 P	Twill (3up / 2down)	5 C	
KMCC-33422B				
KMCC-33423K	75 P	Twill (3up / 2down)	5 S	
KMCC-33423B				
KMCC-87212K	65 P / 34 C	Plain (1up / 1down)	3.5 C	ESD
KMCC-87212B				

- Standard Colors: White, Sky-blue, Pink, Green, and Yellow
- Please asks for the availability of special color to the sales representative.
- Specification is available upon request.
- Above codes, ends with letter K have Kanebo's carbon yarn.
- Above codes, ends with letter B have BASF's copper yarn.
- Filament with letter P stands for polyester
- Filament with letter CA stands for carbon
- Filament with letter C stands for cotton
- Pattern ends with letter D stands for diamond
- Pattern ends with letter C stands for check (grid)
- Pattern ends with letter S stands for stripe

# Nano Max & Neo Chem



Nano Max Dust-free garment applied with functional PU resin has excellent feelings of wearing and comfortableness because of high air permeability and water vapor permeability.

Neo Chem Dust-free garment has not only high ability of filtering through the PTFE Film Lamination but also has chemically resistant. So, it can protect workers from the chemicals.

## Nano Max

- Functional PU coating for superior durability
- Comfortable fit with altered fabric formula for weight reduction
- Functional PU coating for above 80% filter efficiency against particles
- Differentiated soft yarn for comfortable fit
- Superior static control using Japanese Kanebo conductive fiber
- Excellent permeability for pleasant feeling while working

## Neo Chem

- PTFE Film processing technology for above 99% filter efficiency against particles
- PTFE Film processing technology offers superior chemical resistance (Nitric Acid, hydrochloric acid, sulfuric acid and etc)
- Superior static control using Japanese Kanebo conductive fiber

### Technical Data

Contents	Specifications	
	Nano Max	Neo Chem
Air Permeability	$\geq 1.0 \text{ cm}^3/\text{cm}^2/\text{s}$	$\geq 1.0 \text{ cm}^3/\text{cm}^2/\text{s}$
Water Vapor Permeability	$\geq 6,000 \text{ mmH}_2\text{O}$	-
Tumbler Particle ( $\geq 0.5\mu\text{m}$ )	$< 500 \text{ ea/cfm}$	$< 500 \text{ ea/cfm}$
Particle Fractional Filter Efficiency	$\geq 80\%$	$\geq 99\%$
Surface Resistivity (sq)	$10^7 \sim 10^9 \Omega$	$10^7 \sim 10^9 \Omega$
Electro Static Propensity (volt)	$< 300$	$< 300$

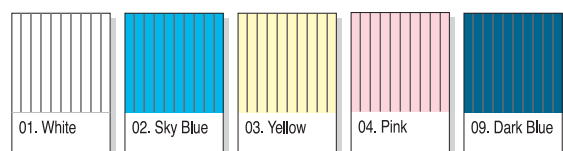
### Fabrics

Code	Description
Nano Check	Class 10 (ISO 4), Current conducted yarn(5mm interval), Check, PU coating
Neo Check	Class 10 (ISO 4), Current conducted yarn(5mm interval), Check, PTFE Film Lamination

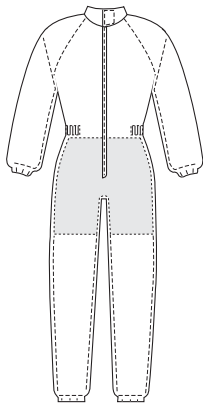
### Size Chart (cm)

Division	S (85)	M (90)	L (95)	XL (100)	2XL (105)	3XL (110)	4XL (115)
Height	150~155	155~160	160~165	165~170	170~175	175~180	180~
Chest	106	110	116	120	120	130	136
Neck	40	41	42	43	44	45	46
Arm Length	81	83	85	88	91	95	100

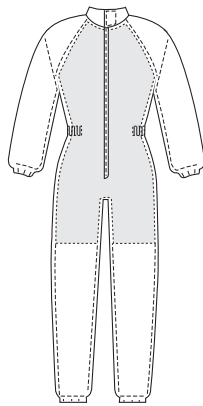
### Color



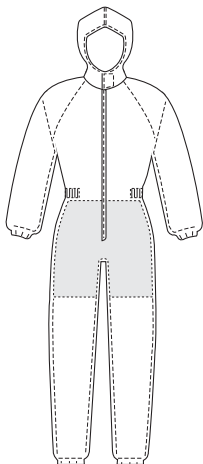




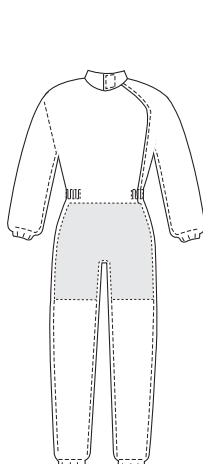
OP01



OP02

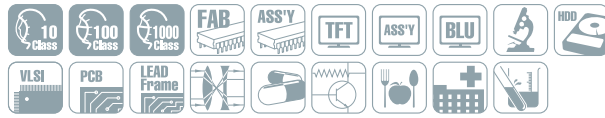


OP04



OP06

## Coverall



KM Coverall is designed for the protective apparel for class 10~1000 cleanroom applications. By minimizing opening of garment design, KM Coverall decreases the possibility of particle generation. In class 10 cleanroom, it is recommended to apply high-density 100% polyester fabric with carbon yarn in grid pattern, along with hood and booties. Optional double arm sleeve, side zip-lock, logo printing by sublimation.

- Minimize opening of apparel
- Double layers applied from waist to upper thigh
- Elastic band closures on wrist and ankle side
- Zip-lock cover sleeve and Velcro tape fastening
- Optional badge or pen holder and logo printing by sublimation is available
- Applications: Apparel for class 10~1000 cleanroom
- Excellent particle filtration efficiency: up to 25~30% at 0.3 $\mu$ m

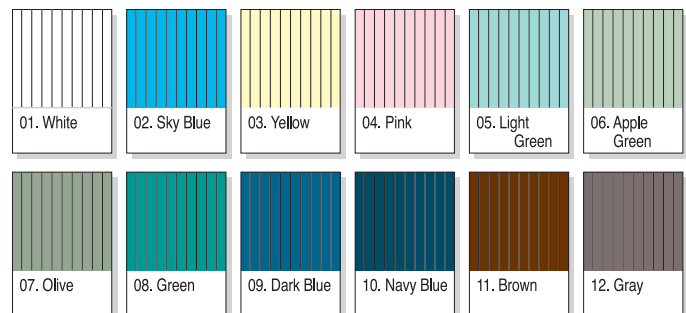
### How to order

Code	Description
OP01	C collar with vertical zip-lock, Elastic wrist, Waist & Ankle band, Double layers from waist to upper thigh
OP02	C collar with vertical zip-lock, Elastic wrist, Waist & Ankle band, Double layers from chest to upper thigh
OP03	C collar with side zip-lock, Elastic wrist, Waist & Ankle band, Double layers from waist to upper thigh
OP04	C collar with vertical zip-lock, Elastic wrist, Waist & Ankle band, Double layers from waist to upper thigh, Adhered hood (H-1~5)
OP05	C collar with vertical zip-lock, Elastic wrist, Waist & Ankle band, Action pleats, Double layers from waist to upper thigh
OP06	C collar with longer side zip-lock, Elastic wrist, Waist & Ankle band, Double layers from waist to upper thigh

### Fabrics

Code	Description
Normal Stripe	Class 1000 (ISO 6), Carbon yarn(5mm interval), Stripe
Normal Check	Class 100 (ISO 5), Carbon yarn(5mm interval), Check
MD Stripe	Class 10~100 (ISO 4~5), Carbon yarn(5mm interval), Stripe
MD Check	Class 10~100 (ISO 4~5), Carbon yarn(5mm interval), Check

### Color



### Size Chart (cm)

Division	S (85)	M (90)	L (95)	XL (100)	2XL (105)	3XL (110)	4XL (115)
Height	150~155	155~160	160~165	165~170	170~175	175~180	180~
Chest	113	115.5	118	120.5	123	125.5	128
Neck	40	41	42	43	44	45	46
Arm Length	45	47	49	51	53	55	57
Waist	27 inch	27~29 inch	29~31 inch	31~33 inch	33~35 inch	35~37 inch	over 37 inch

## Jacket & Pants



KM Jacket & Pants are cleanroom apparel for class 1000. Comparing typical cleanroom coverall, this type of apparel has more opening for comfort and working efficiency. KM Jacket & Pants are classified by collar designs, C or Y collar. It is available to buy jacket or pants separately. Optional badge or pen holder, sublimation logo-printing is available.

- Open design for wearers comfort and working efficiency
- Double layers jacket for extra protection
- Elastic band closure on wrist and ankle
- Zip-lock cover sleeve and Velcro tape fastening
- Optional badge or pen holder, logo printing by sublimation
- Applications: Apparel for cleanroom of class 1000

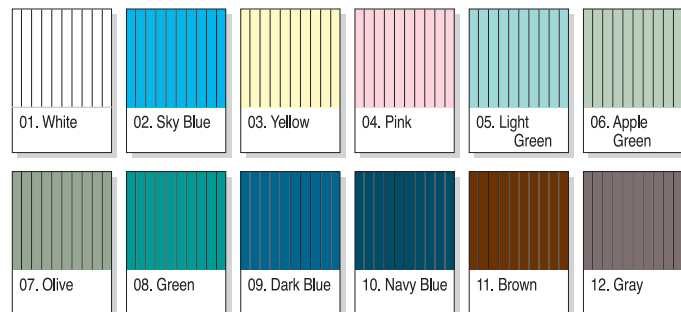
### How to order

Sec.	Code	Description
Two-piece	TP01	C collar with vertical zip-lock, Elastic wrist, waist & Ankle band Twin pockets, Double layers from waist to upper thigh
	TP02	Y collar with vertical zip-lock, Elastic wrist, waist & Ankle band Twin pockets, Double layers from waist to upper thigh
Jacket	JT01	C collar with vertical zip-lock, Elastic wrist & waist band, Twin pockets
	JT02	Y collar with vertical zip-lock, Elastic wrist & waist band, Twin pockets
	JT03	C collar with vertical zip-lock, Elastic wrist & waist band
	JT04	Y collar with vertical zip-lock, Elastic wrist & waist band
	JT05	C collar with vertical zip-lock, Elastic wrist band
	JT06	Y collar with vertical zip-lock, Elastic wrist band
Pants	PT01	Elastic waist band, Ankle band, Double layers from waist to upper thigh
	PT02	Elastic waist band, Double layers from waist to upper thigh

### Fabrics

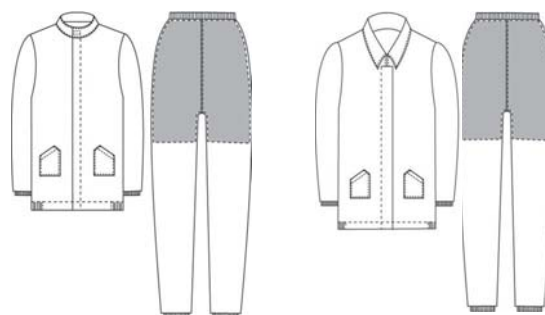
Code	Description
Normal Stripe	Class 1000 (ISO 6), Carbon yarn(5mm interval), Stripe
Normal Check	Class 1000 (ISO 6), Carbon yarn(5mm interval), Check

### Color



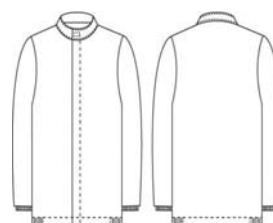
### Size Chart (cm)

Division	S (85)	M (90)	L (95)	XL (100)	2XL (105)	3XL (110)	4XL (115)
Height	150-155	155-160	160-165	165-170	170-175	175-180	180~
Chest	113	115.5	118	120.5	123	125.5	128
Neck	40	41	42	43	44	45	46
Arm Length	45	47	49	51	53	55	57
Waist	27 inch	27-29 inch	29-31 inch	31-33 inch	33-35 inch	35-37 inch	over 37 inch

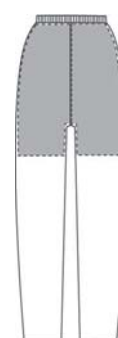


TP01

TP02

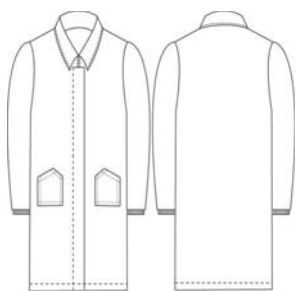


JT01

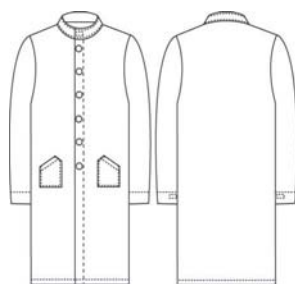


PT02

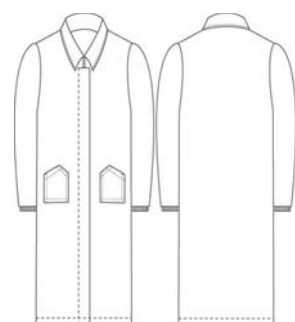




GW01



GW04



GW31

## Gown



KM Gown is protective apparel for clean applications of class 1000 or more. Designed for easy donning over plain outer garment or underwear, KM Gown protects particles from outer garment or underwear through extended coat length. Optional badge or pen holder, sublimation logo prints are available.

- Extra protection with extended coat length
- Outer pockets for small storage
- Optional badge or pen holder, logo printing by sublimation
- Applications: Apparel for cleanroom of class 1000 or more

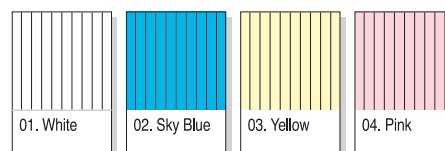
### How to order

Code	Description
GW01	Y collar with vertical zip-lock, Elastic wrist band, Twin pockets, Standard length
GW02	C collar with vertical zip-lock, Elastic wrist band, Twin pockets, Standard length
GW03	Y collar with button lock, velcro wrist band, Twin pockets, standard length
GW04	C collar with button lock, velcro wrist band, Twin pockets, standard length
GW11	Y collar with vertical zip-lock, Elastic wrist band, Twin pockets, length
GW12	C collar with vertical zip-lock, Elastic wrist band, Twin pockets, length
GW21	Y collar with vertical zip-lock, Elastic wrist band, Twin pockets, length
GW22	C collar with vertical zip-lock, Elastic wrist band, Twin pockets, length
GW31	Y collar with vertical zip-lock, Elastic wrist band, Twin pockets, length
GW41	Y collar with vertical zip-lock, Elastic wrist band, length
GW42	C collar with vertical zip-lock, Elastic wrist band, length

### Fabrics

Code	Description
Normal Stripe	Class 1000 (ISO 6), Carbon yarn(5mm interval), Stripe
Normal Check	Class 1000 (ISO 6), Carbon yarn(5mm interval), Check

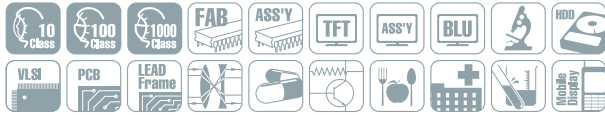
### Color



### Size Chart (cm)

Division	S (85)	M (90)	L (95)	XL (100)	2XL (105)	3XL (110)	4XL (115)
Height	150~155	155~160	160~165	165~170	170~175	175~180	180~
Chest	113	115.5	118	120.5	123	125.5	128
Neck	40	41	42	43	44	45	46
Arm Length	45	47	49	51	53	55	57
Waist	27 inch	27~29 inch	29~31 inch	31~33 inch	33~35 inch	35~37 inch	over 37 inch

## Neo Under Wear



KM Neon under wear is manufactured to apply functional knitting technology that maximizes the absorption force and drying capacity. It is outstanding solution of displeasure and comfortableness (wet sensation, breathable, flexibility and good wearing sensation).

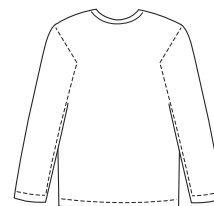
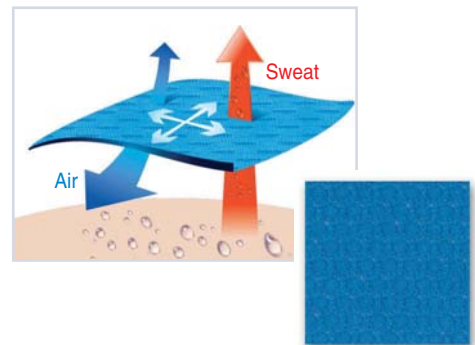
- High absorption force and drying capacity using large surface
- Improving the comfortableness of workers to apply antimicrobial substance
- It has flexibility and good wearing sensation to apply knitting technology
- Soft wearing sensation to apply using the superfine fibers

### How to order

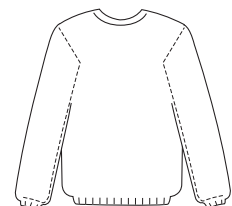
Code	Description	Color
VT-UJ01	TOP, C Collor, Open wrist	White, S/B, Skin, Green, Violet
VT-UJ02	TOP, C Collor, Wrist band	
VT-UP01	Pants, Open ankle	White, S/B, Skin, Green, Violet
VT-UP02	Pants, Ankle band	

### Technical Data

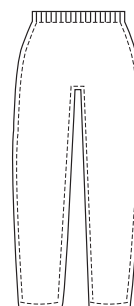
Contents	Unit	Specifications	Test Method
Material	-	Polyester	-
Weight	g/yd	140	-
	g/m <sup>2</sup>	153	-
APC(>0.3β#)	ea/set, 1cfm	< 500	TEST-RP-CC004.3
Vapour resistance	m <sup>2</sup> x Pa/W	2.0 (Standard underwear: ≤10)	KS K ISO 11092
Drying speed	minute	210	KS K 0815
Absorption speed	mm (10mins)	105	KS K 0815
pH	mg/kg	7 (Standard underwear: 4~8)	KS K ISO 3071
Formaldehyde	mg/kg	not detected (≤20) (Standard underwear: ≤ 75)	KS K ISO 14184-1



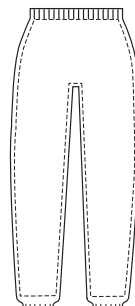
VT-UJ01



VT-UJ02



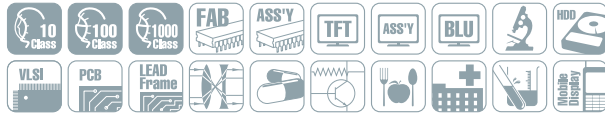
VT-UP01



VT-UP02



## Under Wear



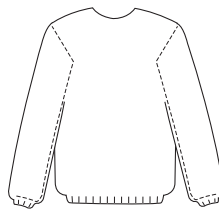
KM underwear designed to be used from class 1 to class 1000 offers an efficient particle control and comfortable fit from using high-tech functional fabric.

Using Ko-Silveron on the existing tricoat under wear instead of carbon conductive fiber, it offers static charge prevention function, antibacterial and deodorization effect.

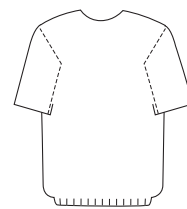
Ko-Silveron Under Wear with great flexibility and feel provides the wearer comfortable working condition when wearing for a long period of time and minimizes particles with 100% Polyester Fabric.

### How to order

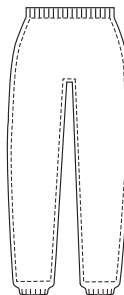
Code	Description	Color
UJ-01	Top, Long-sleeve, Wrist band, Kosilveron	S/B
UJ-02	Top, Half-sleeve, Kosilveron	Pink
UP-01	Pants, Long, Ankle band, Kosilveron	Violet
UP-02	Pants, Half, Ankle band, Kosilveron	



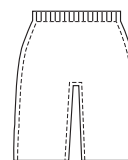
UJ-01



UJ-02

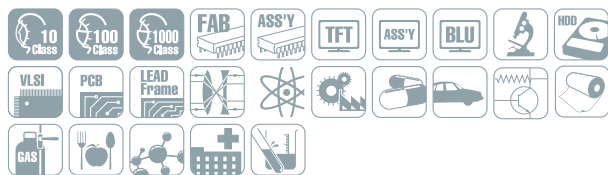


UP-01



UP-02

## Cap & Hood



KM Cap & Hood can be combined with cleanroom coverall or jacket & pants for extra coverage on head & neck side. Contaminants from those part of body can be successfully controlled through proper headgears in accordance with each application needs. KM provides all kind of headgear from class 10 to 100,000 cleanroom from simple head-cap to full cover hood-cap with fabric mask for ultra clean application.

- Protect particles from head, face and neck of wearer
- Wide variety of styles for each application needs
- Comfortable design
- Applications: Headgear for cleanroom class from 10 to 100,000

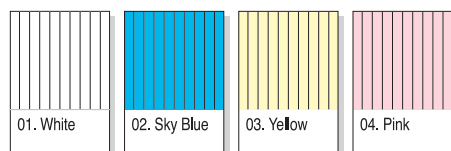
### How to order

Sec.	Code	Description	Size
Hood	H-1	Hood: Standard / Covering for neck and shoulder	S ~ 4XL
	H-2	Hood: Mesh type / Covering for neck and shoulder	
	H-4	Hood: Mask type / Covering for neck and shoulder	
	H-5	Hood: Closed type / Covering for neck and shoulder	
Cap	C-1	Cap: For men (peak, mesh fabric applied on ear side)	S ~ 4XL
	C-2	Cap: For women (peak, mesh fabric applied on ear side)	
	C-3	Cap: For women (No mesh fabric)	

### Fabrics

Code	Description
Normal Stripe	Class 1000 (ISO 6), Carbon yarn(5mm interval), Stripe
Normal Check	Class 100 (ISO 5), Carbon yarn(5mm interval), Check
MD Stripe	Class 10~100 (ISO 4~5), Carbon yarn(5mm interval), Stripe
MD Check	Class 10~100 (ISO 4~5), Carbon yarn(5mm interval), Check

### Color



### Hood size chart

Division	S	M	L	XL	2XL	3XL	4XL
Head	53.5 cm	55 cm	56.5 cm	58 cm	59.5 cm	61 cm	62.5 cm



H-1



H-2



H-4



H-5



C-1



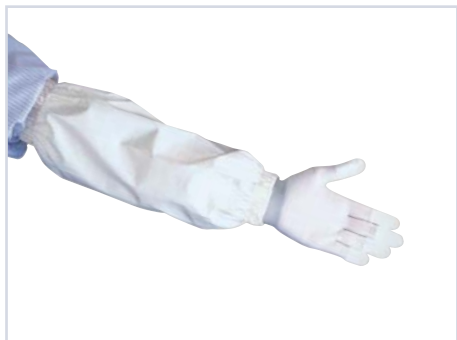
C-2



C-3



AV-1, Arm Sleeve / Polyester



AV-2, Arm Sleeve / Urethane Coated

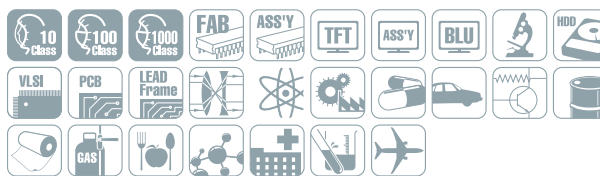


AP-1, Apron / Polyester



AP-5, Apron / Urethane Coated

## Garment Accessory



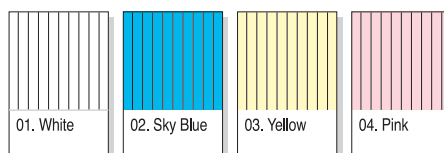
KM Garment Accessory is an additional protection gear on existing cleanroom apparel including arm sleeve, apron, mask and shoe cover. Contamination issue on cleanroom is depending on how to eliminate contamination source effectively, and KM Garment Accessory provides perfect barrier to all kind of contaminants generated from outer garment and wearers' body.

- Full protection on openings or sensitive part of apparel
- Urethane coated fabric offers water-proof operation
- Excellent sewing quality provides prolonged life
- Applications: Protective gear for cleanroom application from 10 to 100,000

### How to order

Sec.	Code	Description
Arm Sleeve	AV-1	Polyester
	AV-2	Urethane coated
Apron	AP-1	Polyester
	AP-2	Polyester / One pocket
	AP-3	Polyester / Two pocket
	AP-4	Polyester / Three pocket
	AP-5	Urethane coated
Mask	MK-1	Polyester
Shoe Cover	SC-1	Polyester, Boots type
	SC-2	Urethane coated, Boots type
	SC-3	Polyester, Ankle type
	SC-4	Urethane coated, Ankle type
Garment Bag	GB-1	Polyester

### Color



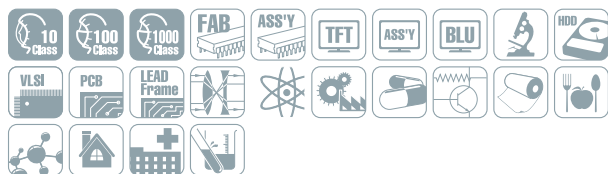
SC-1, Shoe Cover / Polyester



MK-1, Mask / Polyester



## Disposable Face Mask



KM Face Mask is specially developed for cleanroom manufacturing applications. 3 layer non-woven fabric provides maximum barrier against particulate from skin and nose. Each layer of mask is designed for functional needs, as softness, filtration efficiency, and breathability. The 100% melt-blown polypropylene as a filtration media provides 90% efficiency of 0.1 micron at 2.55mm/Ag. Each edge of mask is ultrasonic sealed, which offers cleanliness and durability. Comfortable, high efficiency KM Face mask features various sizes, with ear-loop band, head-band or tie-back type.

- Effective 3-layer construction
- 90% filtration efficiency of 0.1 micron
- Comfortable elastic band with less ear fatigue
- Particle free ultrasonic sealing on the edges
- 230mm wide mask for extended protection
- Applications: Disposable face mask for cleanroom operations

### How to order

Code	Descriptions	Packing Unit
KMFM-181	180 x 90mm, 3 layers / ear-loop type	50 pcs / 40 bags
KMFH-181	180 x 90mm, 3 layers / head-band type	
KMFT-181	180 x 90mm, 3 layers / tie-back type	
KMFM-181N	180 x 90mm, PE filmed 3 layers / ear-loop type	
KMFH-181N	180 x 90mm, PE filmed 3 layers / head-band type	
KMFT-181N	180 x 90mm, PE filmed 3 layers / tie-back type	
KMFM-211	210 x 90mm, 3 layers / ear-loop type	
KMFH-211	210 x 90mm, 3 layers / head-band type	
KMFT-211	210 x 90mm, 3 layers / tie-back type	
KMFM-211N	210 x 90mm, PE filmed 3 layers / ear-loop type	
KMFH-211N	210 x 90mm, PE filmed 3 layers / head-band type	
KMFT-211N	210 x 90mm, PE filmed 3 layers / tie-back type	
KMFM-231	230 x 90mm, 3 layers / ear-loop type	
KMFM-231N	230 x 90mm, PE filmed 3 layers / ear-loop type	

### Technical Data

Contents	Specifications
Dimension	177/ 207/ 227 ± 3
Length (mm)	90 ± 3
Width (mm)	20 ± 1
Filtration Efficiency (%)	99
Pressure Drop (ΔP)	2.5
Particle genertices (pcs / cft, > 0.3μm)	<100 [ PE film type: <50]
Skin irritation	none
Materials	
Outer layer	P.P thermal bond non-woven
Inner layer	PE breathable mesh film
Filter media	P.P thermal bond non-woven
Band	100% Meltblown
Nose clamp	Polyurethane rubber
Side tapes	Steel wire coated by PVC
	Polyester spunbond non-woven



Disposable Mask



PU Band Type



Wooly Band Type

## Shoe Cover



Shoe Cover

KM Shoecovers has made of P.P spunbonded Non-woven and designed to use in cleanroom environment as well as have simple design and comfortable wearing.

### Technical Data

	Description	Packing
Material	Polypropylene SB Non-woven	
Weight	35 gsm / 40 gsm	
Color	Light Blue	100pcs / bag,
Sewing thread	Lint Free Nylon	20bag / box
Size	21 inch (L) $\pm$ 0.5 inch x 160mm (H) $\pm$ 5mm	

## Bouffant Cap



Bouffant Cap

PP Non-woven Hair cap was designed for cleanroom use.

### Technical Data

	Description	Packing
Material	Polypropylene SB Non-woven	
Weight	20 gsm / 30 gsm	
Color	White / Light Blue / Pink	100pcs / bag,
Sewing thread	Lint Free Nylon	20bag / box
Size	21 inch (L) $\pm$ 0.5 inch stretched	

## Neo Shoes & Boots



KM Neo Safety Shoes & Safety Boots are designed for semiconductor and clean room area and these have ergonomic design.

For the protection from shock, Neo Shoes & Boots are using the Air bag. KM Neo Safety Shoes & Safety Boots provide comfortable fit with highly optimized out sole banding groove.

These products can control the generating particles and decrease the statics by using the high clean PU material.

- High durability and Abrasion resistance
- Differentiated air bag by size. (Area of air bag: Min 20.075 ~ Max 32.840)
- Improve the degree of hardness of Air bag for preventing from shocks
- Improve the wearing sensation by the types
- High conductivity by applying the Insole Carbon fabric
- Semi-permanent electrification effect
- Constant surface resistance despite of sweat and moisture
- Preventing the yellow color phenomenon by UV absorber



Neo Boots (KMBU-01N)

### How to order

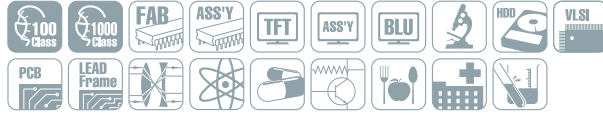
Code	Description	Size
KMBU-01N	Neo Safety Boots	225mm ~ 290mm (5mm interval)
KMSU-01N	Neo Safety Shoes	290mm ~ 320mm (10mm interval)



Neo Shoes (KMSU-01N)



## Static-dissipative Shoes



KM Shoes are the most reliable footwear in the cleanroom for semiconductor, FPD and in the production line for electronics and telecommunications. It is manufactured through up-to-date injection molding system so that durability and longevity are superior than others.

- High density and light weight urethane form releases pressure from feet
- Ergonomic design makes wearers feel less fatigue
- Constant resistivity level to  $10^7 \sim 10^9 \Omega / m^2$  even by sweat and moisture
- Ko-Silveron insole maximizes the anti-static, anti-fungal and deodorant properties
- Special UV treatment slows down yellowish on outer sole

### How to order

Style	Code		Description
	PU sole	PVC sole	
01	KMSU-01	KMSD-01	220mm ~ 290mm (5mm interval) 290mm ~ 310mm (10mm interval)
02	KMSU-02	KMSD-02	
03	KMSU-03	KMSD-03	
04	KMSU-04	KMSD-04	
05	KMSU-05	KMSD-05	
06	KMSU-06	KMSD-06	



KMSU-01



KMSU-02



KMSU-03



KMSU-04

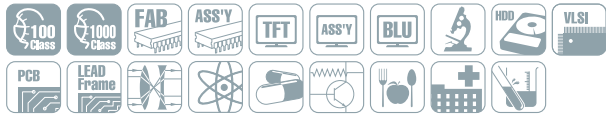


KMSD-01



KMSD-06

## Conductive Shoes



KM Conductive Shoes have carbon mixed PVC outer sole to ground static buildup into the conductive floor. These light-weight and durable cleanroom shoes are ideal for the environment where ESD issue is the major concern. KM Conductive Shoes adopted urethane form to absorb shock from the heel, so wearer can work for long time with less fatigue from feet.

- Carbon mixed PVC sole for conductivity
- Ergonomic design & light-weight construction
- Constant resistivity level to  $10^4 \sim 10^6 \Omega / m^2$
- High density urethane form release pressure from feet
- Special UV treatment slow down yellowish on outer sole
- Sanitized material restrict fungus or microbial propagation
- Applications: Footwear for ESD sensitive cleanroom applications

### How to order

Style	Code	Size
01	KMSC-01	
02	KMSC-02	
03	KMSC-03	220mm ~ 290mm (5mm interval)
04	KMSC-04	290mm ~ 310mm (10mm interval)
05	KMSC-05	
06	KMSC-06	



KMSC-01



KMSC-02

## Slippers



KM Slippers are made of static dissipative PU sole for ESD control in the micro electronic industry. By static dissipative PU material, KM Slipper is more durable and less abrasive than those are made of PVC. KM's patented ergonomic insole design makes wearer feels less fatigue with firm grip on feet.

- Static dissipative PU sole
- Durable and abrasive resistant structure
- Constant resistivity level to  $10^7 \sim 10^9 \Omega / m^2$
- Ergonomic insole design and light weight construction
- Sanitized material restrict fungus or microbial propagation
- Applications: Footwear for ESD sensitive industrial applications

### How to order

Style	Code	Size
01	KMS-01 (Slippers)	220~300mm (10mm interval)
02	KMS-02 (Sandal)	



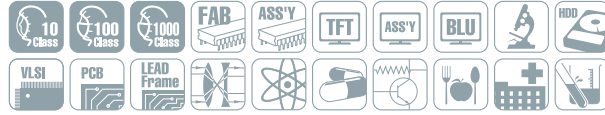
KMS-01, PU/Dissipative



KMS-02, PU/Dissipative



## Boots



KMBU-01, Standard/PU



KMBD-01, Standard/PVC



KMBC-02, Mesh/PVC

KM Boots are designed for critical cleanroom area where particle & static discharge should be controlled strictly. For extra protection of particle generation, KM Boots attach fabric sleeve on shoes, and the fabric is same as that of cleanroom garment.

- Static dissipative PU & PVC or Conductive PVC outsole
- Keep constant surface resistivity of  $10^4 \sim 10^6 \Omega / m^2$  even when contamination by sweat or humidity: Conductive
- Ergonomic design and light weight construction
- Excellent particle filtration efficiency: up to 95% at  $0.3 \sim 0.5 \mu m$
- Velcro tape knee fastener

### How to order

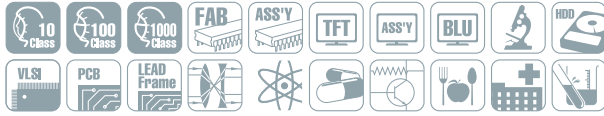
#### Standard / Mesh type

Style	Description	Outsole Material			Size
		PU		PVC	
		Dissipative	Dissipative	Conductive	
01	Standard	KMBU-01	KMBD-01	KMBC-01	220mm ~ 290mm (5mm interval)
02	Mesh type	KMBU-02	KMBD-02	KMBC-02	290mm ~ 310mm (10mm interval)

### Size Chart

Men				Women			
mm	USA	UK	EUR	mm	USA	UK	EUR
245	6.5	5.5	38.5	215	5	2	34.5
250	7	6	39	220	5.5	2.5	35
255	7.5	6.5	40	225	6	3	35.5
260	8	7	40.5	230	6.5	3.5	36
265	8.5	7.5	41	235	7	4	36.5
270	9	8	42	240	7.5	4.5	37
275	9.5	8.5	42.5	245	8	5	37.5
280	10	9	43	250	8.5	5.5	38
285	10.5	9.5	44	255	9	6	38.5
290	11	10	44.5	260	9.5	6.5	39
295	11.5	10.5	45	265	10	7	40
300	12	11	45.5	270	11	7.5	40.5
310	13	12	47	275			41
	14	13		280			42
	15	14		290			43
	16	15		300			44
	17	16					45
	18	17					
	19	18					
	20	19					

## Neo Safety Shoes & Safety Boots



KM Neo Safety Shoes & Safety Boots are designed for semiconductor and clean room area. These have ergonomic design that is applied high intensity steel at the front of shoes and boots. For the protection from sharp materials and shock, Neo Safety Shoes & Boots are applying the bulletproof sole & Air bag.

KM Neo Safety Shoes & Safety Boots provide comfortable fit with highly optimized out sole banding groove.

Using ESD fabric and ESD EVA Sponge in an insole, it decreases generating statics.

- Preventing from sharp materials by bulletproof insole
- Obtain the Safety certification
- Differentiated air bag by size. (Area of air bag: Min 20.075 ~ Max 32.840 cm<sup>3</sup>)
- Improve the degree of hardness of Air bag for preventing from shocks
- Improve the wearing sensation by the types
- Safety improvement by using the high intensity steel at the front of shoes and boots
- Using the ESD fabric and ESD EVA sponge in an insole to decrease the statics
- High conductivity by applying the Insole Carbon fabric
- Semi-permanent electrification effect.
- Constant surface resistance despite of sweat and moisture.

### How to order

Style	Code	Size
KMSF-15NP	Neo, Boots type, Plastic toe, Single outsole, Short	220mm ~ 290mm (5mm interval)
KMSF-15NP	Neo, Boots type, Plastic toe, Single outsole, Long	290mm ~ 320mm (10mm interval)
KMSF-16NP	Neo, Shoes type, Plastic toe, Single outsole	



Neo Safety Boots  
KMSF-15NP

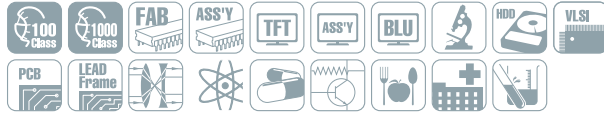


Neo Safety Boots  
KMSF-15NP



Neo Safety Shoes  
KMSF-16NP

## Cleanroom Safety Shoes & Safety Boots



**KMSF-13 (Boots type)**

KM cleanroom safety shoes/boots are protective footwear built in a reinforced plastic toe.

The high density PU outsole release pressure from feet and these shoes have superior anti-skid, abrasion resistance, anti-static and permeability.

### How to order

Style	Code	Size
KMSF-13	Boots type, Plastic toe, Single outsole	230mm ~ 290mm (5mm interval)
KMSF-14	Shoes type, Plastic toe, Single outsole	290mm ~ 300mm (10mm interval)
KMSF-13NP	Boots type, Plastic toe, Single outsole	225mm ~ 290mm (5mm interval)
KMSF-14NP	Shoes type, Plastic toe, Single outsole	290mm ~ 310mm (10mm interval)



**KMSF-14 (Shoes type)**



**KMSF-14NP (Shoes type)**



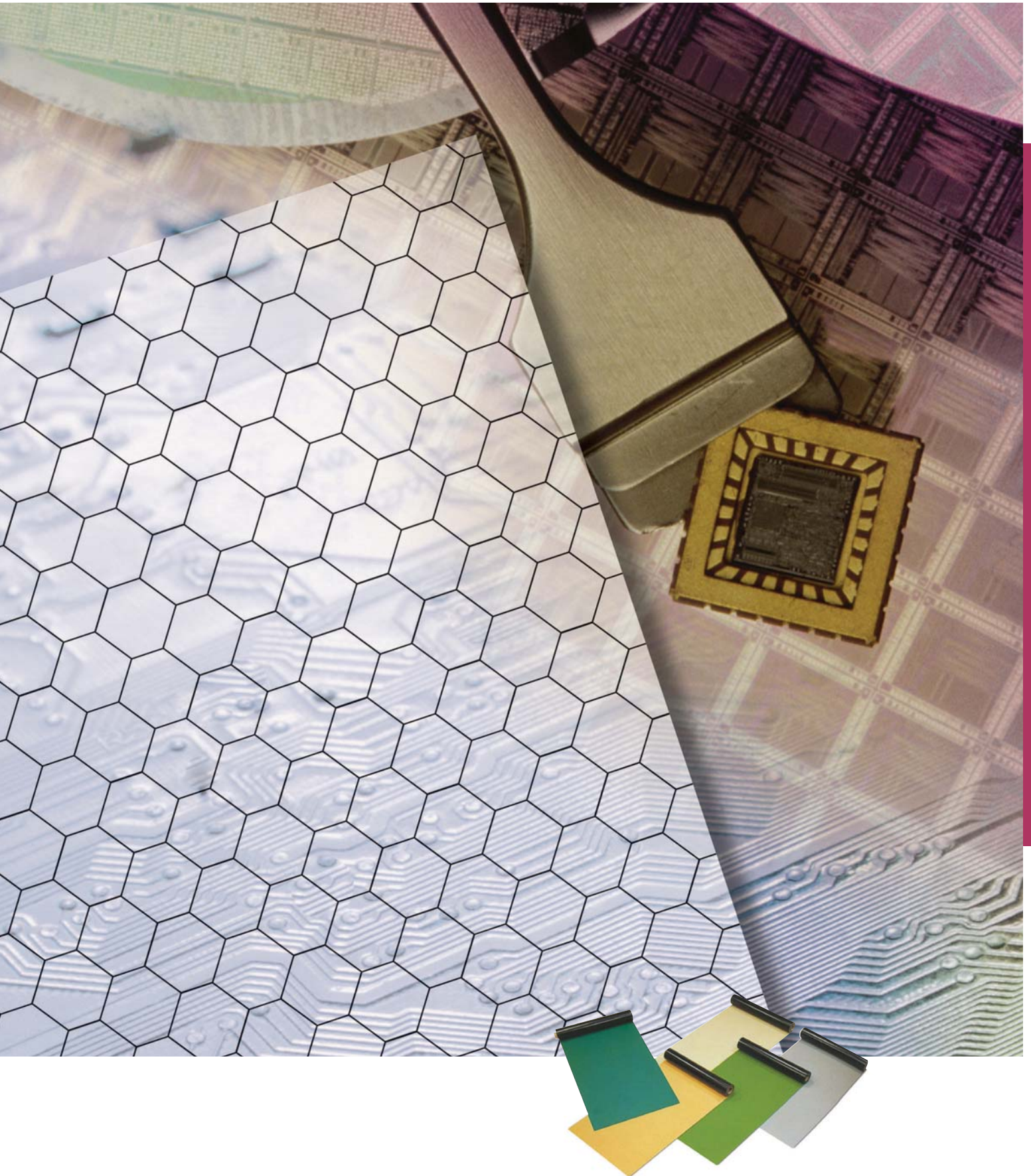
**KMSF-13NP (Long Boots type)**



**KMSF-13NP (Short Boots type)**

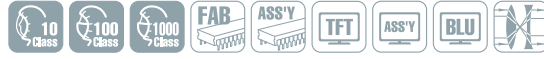


# ESD PRODUCTS



# ESD PRODUCTS

## ESD Table Mat



KM ESD Table Mat is constructed of colored static-dissipative rubber layer and conductive black rubber layer. In the ESD sensitive environment, KM ESD Table Mat drains electric discharge of 20KV to a harmless level in a second. Lightly textured and low reflective finishing on top layer offers better working conditions. Anti-skid, conductive bottom layer is ground static build-up from various sources.

- Retain electric potential difference to 0V
- Oil, grease, and most common solvent resistance
- No peeling, chipping and curling
- Lightly textured & low reflective top layer
- Colors: Green/Black, Grey/Black(Glossy or Non-glossy is available)
- Applications: Floor or tabletop mat for ESD

### How to order

Length(m)	Thickness (mm)	Width (mm)			
		600	900	1000	1200
10	2	CCBP-1206	CCBP-1209	CCBP-1210	CCBP-1212
	3	CCBP-1306	CCBP-1309	CCBP-1310	CCBP-1312
20	2	CCBP-2206	CCBP-2209	CCBP-2210	CCBP-2212
	3	CCBP-2306	CCBP-2309	CCBP-2310	CCBP-2312

### Technical Data

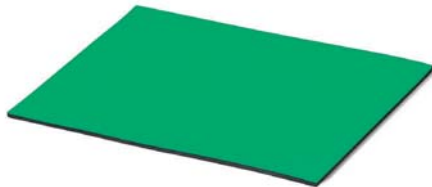
Contents	Specifications
Surface Resistivity ( $\Omega / m^2$ )	Top layer $10^8 \sim 10^9$
	Bottom layer $10^4 \sim 10^5$
Static Decay Time (sec. / 5KV $\rightarrow$ 0V)	< 0.05

## Ground Cord



Ground Cord is designed for linking between the grounding terminal and the table, mats and precision tools at ESD sensitive environment. 1M $\Omega$  Resistor is attached for preventing the accident caused by the static electricity and the countercurrent while at work.

- 1M $\Omega$  Resistor is attached for preventing the countercurrent
- Connection cord for grounding



ESD Table Mat  
Green / Black



Grey / Black Mats



GC-01

GC-02

GC-03



## ESD Cushion Mat



KM ESD cushion mat not only provides great comfort and less fatigue on waists and knees but also protects the electrostatic discharge.

- Semi-permanent anti-static property ( $10^7 \sim 10^9 \Omega/m^2$ )
- No carbon-black, surface active agent, heavy metal, inorganic saline
- Superior chemical resistance, abrasion resistance and durability (Environment-friendly and non-toxic TPU products with the high intensity)
- Finger-pressure therapy effect and anti-fatigue effect for sinews and bones
- Standard size: 600mm x 900mm



ESD Cushion Mat

## Wrist Strap

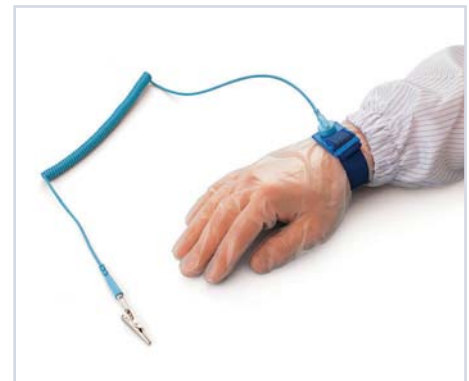


Wrist strap is a tool grounding the static electricity and prevents its accident. 1M $\Omega$  Resistor is attached on it for keeping off countercurrent and any length for Coil Cord is available according to working environments.

- 1M $\Omega$  Resistor is attached for preventing the countercurrent.
- Class: Clip and terminal types are available
- Applications: Conductive wrist band for Semiconductors and electronic parts

### How to order

Code	Descriptions	Packing Unit
KMWS-10	10 ft	1pc / bag
KMWS-15	15 ft	
KMWS-F	Wireless	



KMWS-10



KMWS-F



Conductive Part Box



KM Conductive Part Box is made of polypropylene with carbon for PCB, Electronic industries. To prevent and protect ESD damage and physical shock, KM Conductive Part Box is formulated with high-grade raw materials, and formed through up-to-date precise molding system in the controlled environment.

- Protect products or parts from ESD
- High-grade raw materials
- Surface resistivity:  $\leq 10^5 \Omega$
- Variety of sizes for application needs
- Applications: Store parts or products for PCB, Electronic industries

## How to order

Code	Size (WxLxH)	Description	Packing Unit
KMTB-331	103 x 94 x 53mm	Part Box	1 pcs
KMTB-332	104 x 165 x 76mm		
KMTB-333	148 x 241 x 129mm		
KMTB-334	211 x 352 x 166mm		

## Magazine Rack



KM Magazine Rack is designed for the storage of PCBs at ESD sensitive environment. Made conductive ABS material, KM Magazine Rack provides protective shelter, while preventing damages from physical impact and ESD. Its precise design technologies make it possible to store as many as up to 50 PCB units in a small rack without damage to other PCBs.

- Conductive material protect PCBs from ESD
- No twist or structural transform at prolonged use
- Solid ABS body protect PCBs from impact outside
- Precise rack design save space
- Applications: PCB storage rack

## How to order

Code	Actual Size (W x L x H, mm)	PCB Size (W x L, mm)	Capacity	Pitch	Mat'l	Packing Unit
KMEM-201	318 x 360 x 580	80 ~ 258 x 330	51 pcs	10	ABS	1 set
KMEM-202	318 x 355 x 570	60 ~ 248 x 330	50 pcs			
KMEM-203	400 x 460 x 575	64 ~ 334 x 430	50 pcs			
KMEM-204*	318 x 360 x 580	80 ~ 258 x 330	51 pcs			

\*KMEM-204 is for SMD

## ESD PVC Sheet



### Antistatic PVC Sheet

Antistatic PVC sheet is made of soft vinyl chloride film, which has anti-static property. Through it, Antistatic PVC sheet provides not only uninflammability but also high degree of transparency.

- Surface resistivity: Inside  $10^{10} \sim 10^{11} \Omega / m^2$  (JIS K-6911)
- Excellent draping ability and processing ability
- Applications: Barrier wall, curtain or cover for ESD sensitive area

### Conductive PVC Sheet

KM Conductive PVC Sheet can be utilized as a barrier wall or protective curtain material in the ESD sensitive environment. Made of anti-static PVC sheet, continuous honeycomb black carbon lines are printed on one side of PVC sheet. 0.5mm thickness PVC sheet has good draping ability so that it can be used as protective cover or instruments where electro-static should be controlled.

- 0.3mm ~ 0.5mm thickness PVC sheet with excellent draping ability
- Surface resistivity: Inside  $10^4 \sim 10^6 \Omega / m^2$ , Outside  $< 10^{10} \sim 10^{11} \Omega / m^2$
- Max 1.2m width of sheet.
- Applications: Barrier wall, curtain or cover for ESD sensitive area

### Antistatic PVC Sheet UV

Antistatic PVC Sheet UV maintains equivalent antistatic property of Antistatic PVC sheet and also restrains UV transmission. Refreshing environments are remained by protecting UV.

- Surface resistivity:  $10^{10} \sim 10^{11} \Omega / m^2$  (JIS K-6911)
- UV protecting rate: 98%

### Conductive PVC Sheet BK

Conductive PVC Sheet BK is made of soft vinyl chloride film with carbon and used as a blackout curtain for a darkroom inside the cleanroom.

- Surface resistivity: inside  $10^4 \sim 10^6 \Omega / m^2$ , outside  $10^{10} \sim 10^{11} \Omega / m^2$
- Transmission rate of electric light: 0.0%

#### How to order

Description	Size	Thickness	Packing Unit
Antistatic PVC Sheet			
Conductive PVC Sheet	1,370 mm × 30 m	0.3 mm / 0.5 mm	1 roll
Antistatic PVC Sheet UV			
Conductive PVC Sheet BK			



Antistatic PVC Sheet



Conductive PVC Sheet



Antistatic PVC Sheet UV



Conductive PVC Sheet BK



ESD PVC Sheet



Model 310A



## Ionizing Blower

Tribocharging is a typical ESD source and induced field from insulators must be controlled in EPA(ESD protected area).

Process required insulators are commonly used in many places and should be neutralize by ionization systems.

CoreStat auto-balanced technology, Model 310A has designed versatile applications for semiconductor backend, printed circuit board assembly and general electronics applications.

Model 310A ionizing blower doesn't required regular based calibration and intrinsically maintain low offset voltage within a spec.

Facility monitoring system interface will allow real time ionizer status monitoring and give visual(LED) & audio(buzzer) alarms when HV power fail.

### Features

- CoreStat Auto-Balanced Technology
- Steady-state DC Ion Emission
- Low Balance
- Facility Monitoring System(FMS) Interface
- Alarm (HV Power Fail)
- Small Size for In-Tool and Bench Top

### Benefits

- No Calibration Required
- 4-20mA Current Loop and Relay Output Monitoring
- Visual Alarm
- Audio Alarm
- Emitter Point Easy Clean and Replace
- Connect to Process Equipment
- Versatile Applications

### Technical Data

Input Voltage	24V DC, 7.2W (Maximum)
Ion Emission	Steady-State DC Technology
Balance	< $\pm 20V$
Discharge	$\pm 1000V$ to $\pm 100V$ less than 2 seconds at 30cm $\pm 1000V$ to $\pm 100V$ less than 5 seconds at 60cm
Air flow	100 CFM
Emitter Point	Tungsten 99.99%
Alarm Function	Visual(LED), Audio(Buzzer) HV Power fail
Output Monitoring	FMS Interface
Material	Ionizer body- ABS (Gray) Filter cover- ABS (Black) Bracket- Aluminum
Operating Environment	Temperature : 15~35°C, Humidity : 35~85% RH
Dimensions	125x135x69.5mm
(WxHxD)	(with bracket 152x154.5x69.5mm)
Weight	571g(with bracket)



# SAFETY PRODUCTS







# SAFETY PRODUCTS

## Palm PU Coated / Dyneema



Dyneema

KM Dyneema Gloves are made of urethane coated special fabric, called Dyneema. Unlike general fabrics such as polyester or nylon, Dyneema has exceptional tensile strength, UV protection and chemical resistance. With these characteristics, KM Dyneema Gloves are the best solution for protective working gloves at rigorous applications or heavy-duty jobs.

- Superior breaking strength, cut and impact resistant fabric
- Urethane coating prevent contaminants and anti-skid property
- Highly stable to various acidic and alkaline solution
- Extremely light weight fabric
- UV protection treatment
- Applications: Heavy industries including Machinery, Shipbuilding, Aerospace, etc.

### How to order

Code	Size	Description	Packing Unit
KMDM-701	S	Palm coating	10 prs / 30 bags
KMDM-702	M		
KMDM-703	L		

## Cut Level 5 Glove



Cut level 5 Glove

Newly developed Cut Resistance Level 5 (EN 388 standard) glove is used in variety of applications and industries, such as wiring operation, construction area, mechanical assembly, glass application and car industries.

- Excellent abrasion & cutting resistance
- High dexterity



## Chemical Glove



Durable, high-quality, all-around glove gives protection from acids, caustics, oils, grease and many solvents.

- Chemically reinforced
- Tough and Durable Thicker gauge ensures better abrasion resistance
- Safety Longer Cuff for protect your hands



Nitrile Glove



Neoprene Glove



KMN-95



N-7000



KM-1001



KM-2001

## Cup Mask



### KMN-95

- Specialized 3 layered structure
- NIOSH N-95, KF94 Certified
- Disease control (against H1N1, AI, SARS, Animal, dust and etc.)

### N-7000

- Comfortable fit using soft sponge
- Intensive care room, aseptic room, Laboratory and etc.
- Valve for exhaust

#### How to order

Code	Description	Packing Unit
N-7000	Valve type	20 ea / 12 cases / box

#### Test Result

Item	Spec	Result
Inhalation Resistance	< 343.0 Pa	160.7 Pa
Exhaust Resistance	< 345.0 Pa	82.3 Pa
Filteration efficiency	>90%	99.62 %

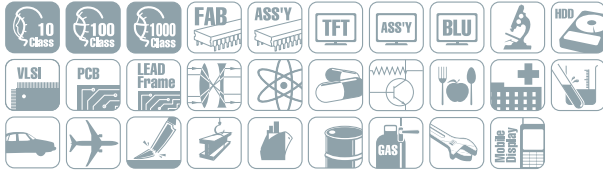
### KM-1001, KM-2001, KM-2002

- Multifunctional 3 layered filter
- Easy to wear and communicate
- Soft and comfortable
- Adjustable head band
- Dust, Shipbuliding, Painting, Construction, Automobile

#### How to order

Code	Description	Packing
KM-1001	KOSHA Certified (94%)	
KM-2001	KOSHA Certified (80%), Exhaust Valve type	20 pcs / case
KM-2002	KOSHA Certified (80%)	

## Safety Glasses & Goggles



Safety glasses represent our most lightweight design. They are so lightweight that it is easy to forget that you have them on. It fits smaller faces and female faces very well. as well as it is quite stylish and comfortable.

Alternative soft rubber nose bridge and colorful rubber inserts on the temples are available.

### Baron

- Prescription lens available
- Soft upper shield
- Soft nosebridge
- Adjustable temple angles
- Anti-slip temples
- Lens switchable

P/N: S-Baron 701 (Weight: 26.7g)  
S-Baron 701 IR (Weight: 40g)



Baron (S-Baron 701)



Baron (S-Baron 701 IR)

### TR-Vixen

- Prescription lens available
- Comfortable wearing
- Skin friendly
- Lens switchable
- Light & elastic material

P/N: Vixen 01, Vixen 02 (Weight: 14.6g) Color: Black, Gray, Brown



TR-Vixen

### Big Dipper

- Anti-slip temples
- Soft nosebridge
- Soft upper shield
- Lens switchable

P/N: S-Bigdipper 301 IR (Weight: 31g) Color: Black, Gray

- Anti-slip Cushion
- Soft nosebridge
- Soft upper shield
- Lens switchable

P/N: S-Bigdipper 301 (Weight: 31g) Color: Black, Gray



Big Dipper (S-Bigdipper 301 IR)



Big Dipper (S-Bigdipper 301)



Libra

## Libra

- Anti-slip temples
- Wide & curved lens for side protection

P/N: S-Libra 302 IR (Weight: 21.6g)



Lizard Ven

## Lizard Ven

- Anti-fog coated lens
- High impact polycarbonate lens
- Soft PVC body for comfort fit
- Wearable over own prescription glasses

P/N: Lizard Ven KMG-104A (Weight: 67.9g)



Lizard

## Lizard

- Anti-fog coated lens
- High impact polycarbonate lens
- Soft PVC body for comfort fit
- Wearable over own prescription glasses

P/N: Lizard KMG-501A (Weight: 64g)

## Archer

- Anti-fog coated lens
- High impact polycarbonate lens
- Cushioned temples for comfort fit
- Adjustable temple angles
- UV Protection

P/N: KMSG-201 A (Weight: 29.7g)



Archer

## Scutum

- Anti-fog coated lens
- High impact polycarbonate lens
- Wearable over own prescription glasses
- Wide range of view

P/N: KMSG-101 (Weight: 43.9g)



Scutum

## Whale man / Women

- Prescription lens available
- Side shield
- Lens switchable

P/N: MT01 Man B (Weight: 24.9g) MT02 Women (Weight 24.5g)



Whale Man



Whale Women



## New Lizard

- Anti-fog coated lens
- High impact polycarbonate lens
- PVC body for comfort fit
- UV Protection
- Compatible with goggle shield V1 to allow face protection feature

P/N: New Lizard KMGG-501 (Weight: 120g) V1 (Weight: 60g)



G-501V



## Autoclavable Goggles



- Autoclavable (120°C / 20mins)
- Anti-fog coated lens
- Soft Silicone body for comfort fit
- High impact polycarbonate lens
- Convenient Hook Band

### How to order

Description	Packing
Autoclavable Goggles (Band Type)	1 pc / bag
Autoclavable Goggles (Hook Type)	

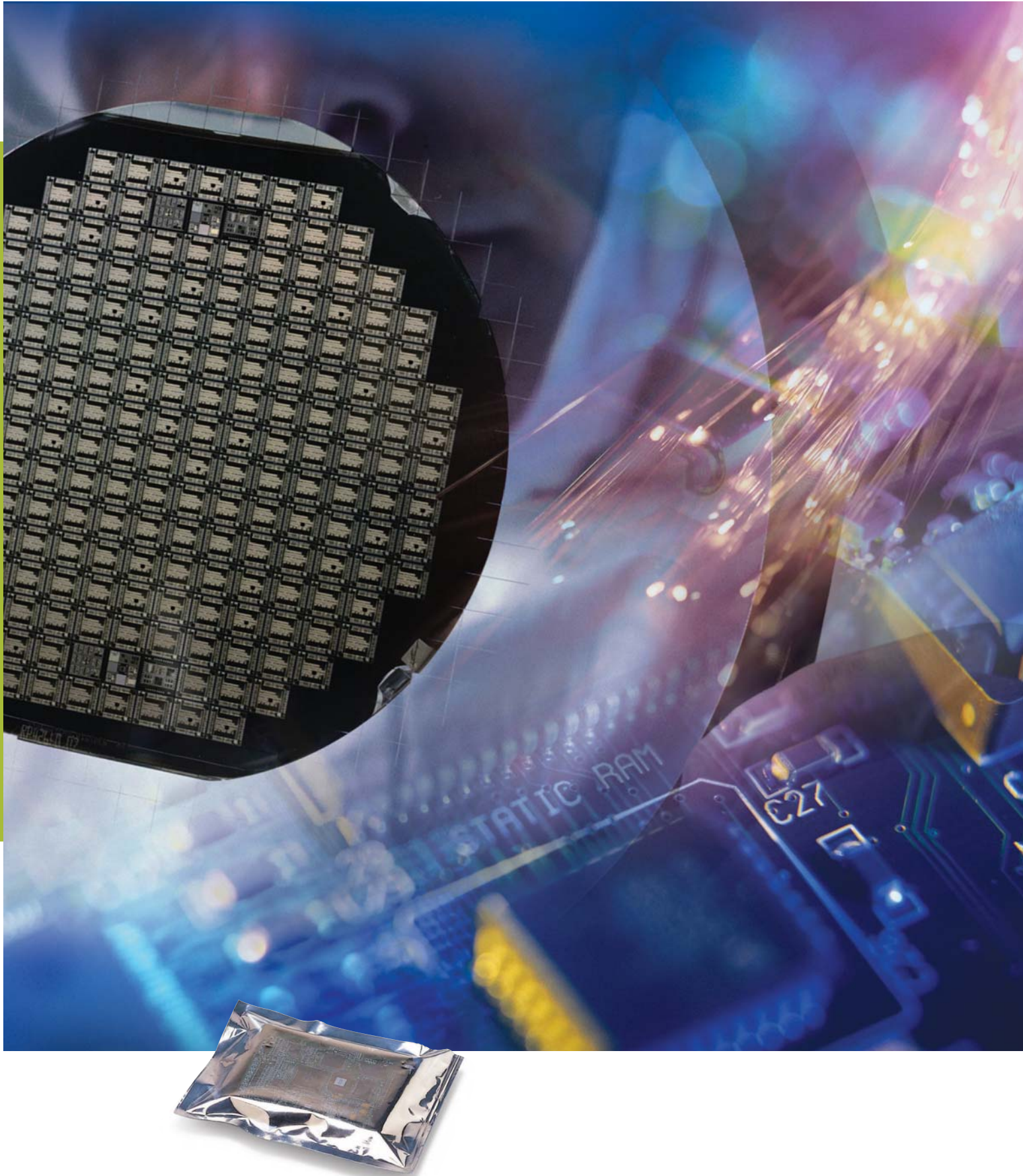


Autoclavable Goggles (Band Type)



Autoclavable Goggles (Hook Type)

# PACKAGE PRODUCTS



# PACKAGE PRODUCTS

## Anti-static PE Bag

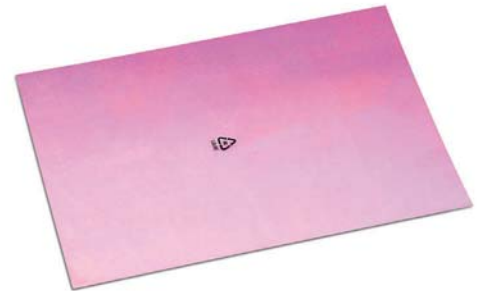
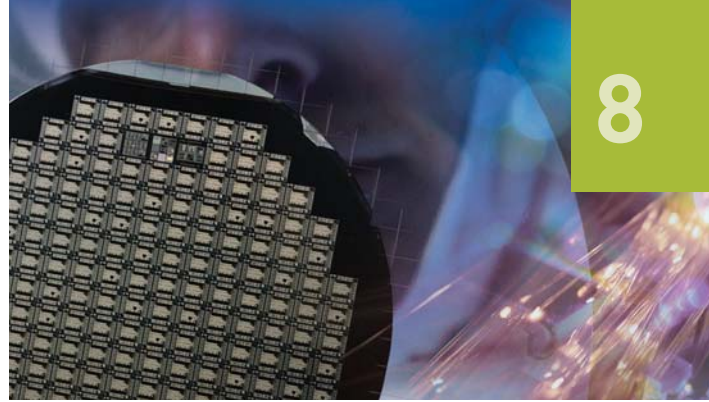


KM Anti-static Bag is made of puncture resistant anti-static polyethylene film. For color coding it comes out on pink, blue, green and white. KM Anti-static Bag provides clear visibility on packaged contents. Since this package has anti-static property, it has less dust and particle on the bag in the logistic process.

- Available thickness: 0.05mm ~ 0.1mm
- Colors: Pink, Blue, Green, White
- Surface resistivity:  $10^{11} \sim 10^{12} \Omega$
- Decay time: Less than 0.02sec on 5KV
- Applications: Package for ICs, PCB and electronic parts

### How to order

This item is custom made. Please ask details to the sales representative.



Anti-static PE bag

## ESD Shielding Bag



KM ESD Shielding Bag is composed of five-layer, Anti-static Coating + PET/Nylon layer + Aluminum + LDPE + Anti-static Coating. Static build-up is minimized and dissipative within a second. Micro thickness aluminum sheet plays another barrier against static build-up from outside of package. Inner film is anti-static polyethylene for protecting aluminum middle layer while providing fused edges in the bag processing.

- Available thickness: 0.075mm
- Surface resistivity: Inside  $10^7 \sim 10^{11} \Omega$ , Outside  $10^9 \sim 10^{11} \Omega$
- Decay time: Less than 0.02sec on 5KV
- Applications: Package for Semiconductors, ICs, PCBs and electronic parts

### How to order

This item is custom made. Please ask details to the sales representative.



ESD Shielding Bag



## Moisture Barrier Bag



KM Moisture Barrier Bag protects moisture infiltration inside the package.

It is composed of five-layer, Anti-static Coating + PET/Nylon layer + Aluminum + LDPE + Anti-static Coating.

Static build-up is minimized and dissipative within a second.

KM Moisture Barrier Bags not only protect humid infiltration inside the package, but protect the electricity.

- Available thickness: 0.08mm ~ 0.15mm
- Surface resistivity:  $10^7 \sim 10^{11} \Omega$
- Decay time: Less than 0.02sec on 5KV
- Applications: Package for ICs, PCBs and electronic parts

### How to order

This item is custom made. Please ask for details to the sales representative.



Moisture Barrier Bags

## PE Clean Bag



KM Polyethylene clean bag is produced in a class 100 cleanroom and made from LDPE, which has superior tensile strength and cleanliness properties.

- Enhanced cleanliness
- Multiple applications
- Excellent tensile strength

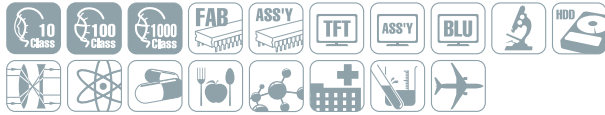
### How to order

This item is custom made. Please ask for details to the sales representative.



PE Clean Bag

## Virgin PE Clean bag



KM Virgin PE Clean Bag is designed to solve the contamination level in high purity polysilicon packaging process.

It is strictly controlled Antioxidants, Ion, Metal Impurity, etc.

- 100% LDPE Virgin Resin
- Manufactured & Packaged in the class 10~100 Cleanroom
- ISO 9001:2008 certified cleanroom manufacturing
- Custom-made Size



Virgin PE Clean bag

## PET Clean Bag



KM PET clean bag is produced in a class 100 cleanroom and made from PET, which has superior tensile strength and cleanliness properties.

- Enhanced Cleanliness
- Multiple Applications
- Excellent Tensile Strength

### How to order

This item is custom made. Please ask for details to the sales representative.



PET Clean Bag





## Wafer Carrier Bag



KM Wafer Carrier Bag is designed to protect the contents from contamination and risk during transportation of wafer process. Perfectly protect the contents as Double packing of PE bag and Aluminum bag.

- Double packing of Aluminum Bag and PE Bag

## Perpak®



Perpak® is KM brand name of Medical Pouch and managed and produced in cleanroom environment which is international standards for medical & pharmaceutical packaging.

Perpak® product has a broad range of sterilization methods and outstanding resistance to microbial penetration and superior tear strength and puncture resistance.

## Perpak® Tyvek Sheet Pouch

- ISO 13485 Certificate
- Easy peel type
- Sterilization Method: E.O gas, Gamma, Plasma
- Custom-made

## Perpak® Tyvek® Roll Pouch

- ISO 13485 Certificate
- Easy peel type
- Sterilization Method: E.O gas, Gamma, Plasma
- Custom-made

## Perpak® Steam Pouch

- ISO 13485 Certificate
- Easy tear type
- Sterilization Method: Steam
- Custom-made



Perpak® Steam Easy-Tear Bag

# SPARE PRODUCTS





# SPARE PRODUCTS

## Sieve



KM Sieve is designed to separate chips, powder and chunk by size after crushing polysilicon to minimize the contamination.

- Material: PVDF, PE, PU
- Custom-made



Sieve

## Harvesting Cart



Harvesting Cart solves a risk of contamination when moving U rod made of high purity Polysilicon.

It is convenient to move and provided with various carts depends on customer's needs. Chuck can be taken apart easily depends on the use.

- Uses SUS 304 as a base
- A variety of choices for materials such as PVDF, UHPE and etc.
- Urethane wheels for easy moving
- Customized size can be designed and built



Harvesting Cart

## Clean Chair



### UCL-10 Series



UCL-10 Series is designed for Cleanroom Class 10(ISO Class 4). This product is using the Die-casting method in contrast with general metal frame chair. It is free from corrosion, physical pollution and twisting because it has not welds. Use high efficient Micro Cloth Filter to filtering the  $0.1\mu\text{m}$  particles over 99%. To protect from statics, we use the Earth Chain all of the products.

- Class 10 Cleanroom Chair
- Using the Micro Filter which is made by Toray(Japan) to filtering  $0.1\mu\text{m}$  particles over 99.99%
- Manufacturing process of body frame is Aluminum Die-casting.
- Free from corrosion and twisting
- Possible to height control
- Color of sheet: Blue, Grey, Black / Material of sheet: ESD, Conductive
- Semiconductor, LCD, Electronics industry

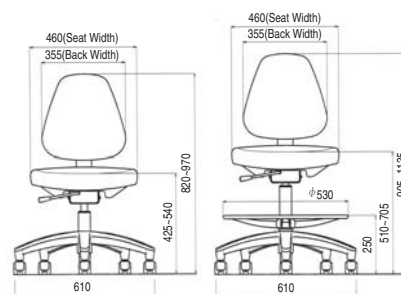
#### How to order

Code	Description
UCL-10C	Class 10, Non-ESD Sheet
UCL-10D	Class 10, ESD Sheet, ESD Control Lever( $10^7 \Omega/\text{sq}$ )
UCL-10CVL	Class 10, ESD Sheet, ESD Control Lever( $10^5 \Omega/\text{sq}$ )
UCL-15C	Class 10, Non-ESD Sheet, Footrest
UCL-15D	Class 10, ESD Sheet, ESD Control Lever( $10^7 \Omega/\text{sq}$ ), Footrest
UCL-15CVL	Class 10, ESD Sheet, ESD Control Lever( $10^5 \Omega/\text{sq}$ ), Footrest



UCL-10C

UCL-15C



### UCL-300 Series



UCL-300 Series is designed for Cleanroom Class 100(ISO Class 5). It is excellent protection ability about corrosion, physical pollution and twisting because of Chroming on Metal Frame. Using the Micro Filter which is made by Toray(Japan) to filtering  $0.1\mu\text{m}$  particles over 99%. It can be possible to control height about back of a chair and chair-sheet.

- Class 100 Cleanroom Chair
- Using the Micro Filter which is made by Toray(Japan) to filtering  $0.1\mu\text{m}$  particles over 99.99%.
- Chroming the Metal Frame body to protect from rust.
- Possible to height control
- Can choice the Dissipative ( $10^6 \sim 10^8 \Omega/\text{sq}$ ) or Conductive( $10^4 \sim 10^6 \Omega/\text{sq}$ )
- Semiconductor, LCD, Electronics industry

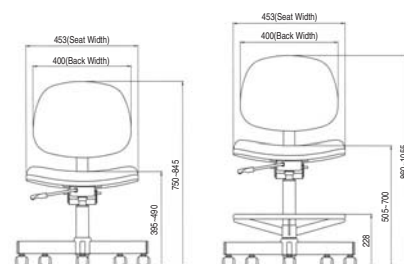
#### How to order

Code	Description
UCL-300	Class 100, ESD Sheet
UCL-300C	Class 100, Non-ESD Sheet
UCL-300D	Class 100, ESD Sheet, Control Lever
UCL-350	Class 100, ESD Sheet, Footrest
UCL-350C	Class 100, Non-ESD Sheet, Footrest
UCL-350D	Class 100, ESD Sheet, Control Lever, Footrest



UCL-300C

UCL-350C

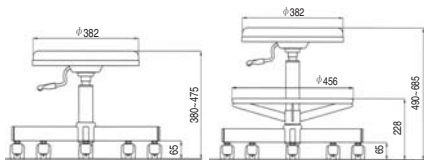






UCL-100C

UCL-150C



## UCL-100 Series



UCL-100 Series is designed for Cleanroom Class 100(ISO Class 5).

It is an economy model that does not have back of a chair.

Like the UCL-300 Series, It uses the Micro Cloth Filter.

- Economy model for cleanroom class 100
- It has not back of a chair / It can control the height
- Using the Micro Filter to filtering 0.1 $\mu$ m particles over 99.99%.
- Chroming metal body to protect from corrosion
- Can choice the Dissipative ( $10^6$ ~ $10^8$   $\Omega$ /sq) or Conductive( $10^4$ ~ $10^6$   $\Omega$ /sq)
- Color of sheet: Blue, Grey, Black
- Semiconductor, LCD, Electronic industry

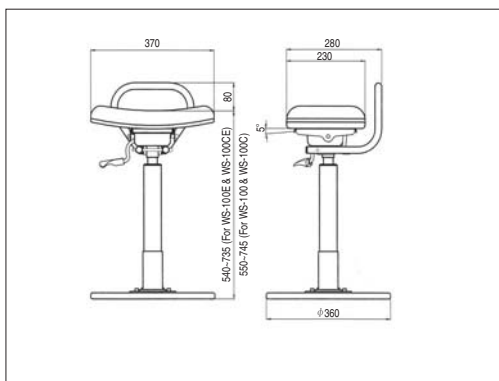
### How to order

Code	Description
UCL-100	Class 100, ESD Sheet
UCL-100C	Class 100, Non-ESD Sheet
UCL-100D	Class 100, ESD Sheet, Control Lever
UCL-150	Class 100, ESD Sheet, Footrest
UCL-150C	Class 100, Non-ESD Sheet, Footrest
UCL-150D	Class 100, ESD Sheet, Control Lever, Footrest



WS-100C

WS-100E



## WS-100 Series



WS-100 Series is specially designed for stand-up task. It can be possible to lean on and sit on the chair.

Area of sheet is smaller than general chair, so it can fight off sleepiness.

Angle of sheet can modulate up to 5 degrees.

- Class 100 or general place Cleanroom Chair
- It can control the height
- Chroming metal body to protect from corrosion
- Color of sheet: Blue, Grey, Black, Brown
- Semiconductor, LCD, Electronic industry

### How to order

Code	Description
WS-100	General Industry, Non-ESD Sheet
WS-100C	Class 100, Non-ESD Sheet
WS-100E	General Industry, ESD Sheet
WS-100CE	Class 100, ESD Sheet





**KM Corp.**

147, Hyeopdongdanji-gil,  
Miyang-myeon, Anseong-si,  
Gyeonggi-do 17600, Korea

TEL: +82-31-678-8800

FAX: +82-31-678-8889

**KM ACT Corp.**

7811 North Shepherd Drive  
Suite 215-A, Houston, TX 77088

TEL : +1-281-405-0888

FAX : +1-281-405-0891

**KM INTERNATIONAL TRADING(Shanghai) CO., LTD**

214111 Room 805,Block B,ICDesign Building,No.33-1,  
Xinda Street, Wuxi New District Jinagsu, China

TEL : +86-510-8520-2922

FAX : +86-510-8520-2202

**[www.kmbiz.com](http://www.kmbiz.com)**

